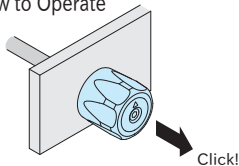
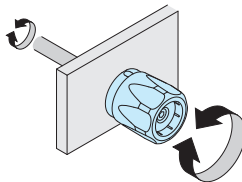


How To Use

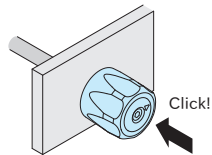
How to Operate



By pulling the housing until it clicks, the teeth of the knob disengage from the base.

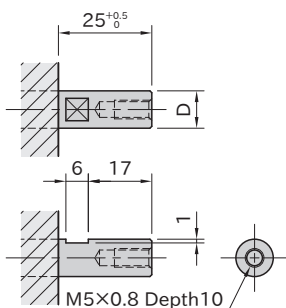


Turn OTLK to rotate the spindle.



By pushing the housing until it clicks, the teeth engage again and lock the rotation of the spindle.

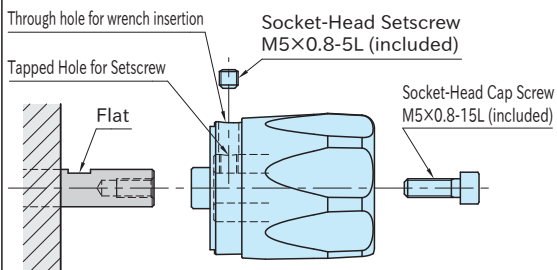
Mounting Spindle Dimension



Size	D (g6)
OTLK4008	8
OTLK4010	10

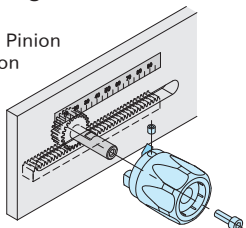
How to Install

1. Pull the housing and align the through hole on the base and the tapped hole on the insert.
2. Align the flat and the tapped hole on the insert and then mount to the spindle.
3. Fix OTLK temporarily using M5x0.8-15L socket-head cap screw included.
4. Fix OTLK to the spindle temporarily using a setscrew included.
5. Tighten M5x0.8-15L socket-head cap screw fully.
6. Tighten the setscrew fully.

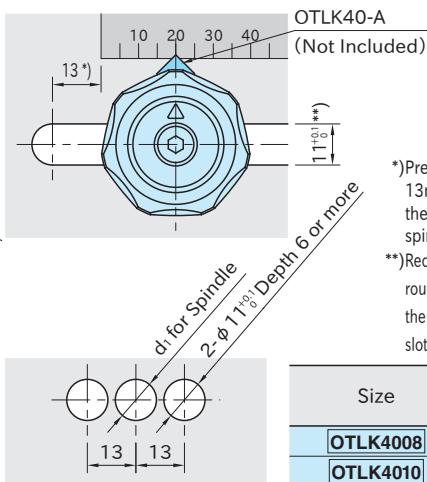
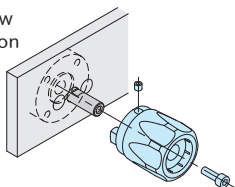


Mounting Hole Dimension

Rack and Pinion Application



Leadscrew Application



*) Prepare clearance of 13mm or more from the end of a required spindle stroke.

**) Recommended surface roughness is $1.6 \sqrt{\text{R}}$ for the inner surface of the slotted hole.

Size	d ₁
OTLK4008	9
OTLK4010	11