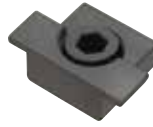
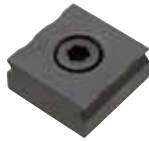
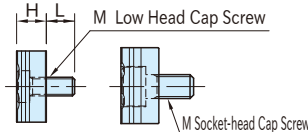
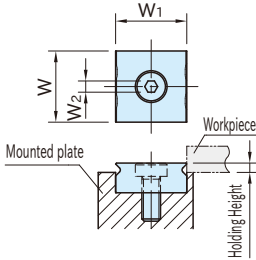




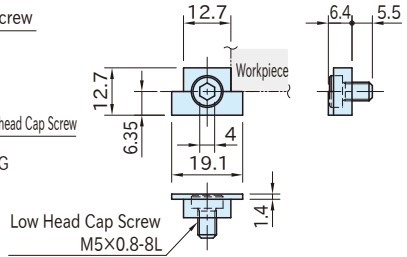
MBVG
(Gripper)



MBVG1913S
(Stop)



MBVG2525G
(Gripper)



MBVG1913G~1925G (Gripper)

MBVG1913S (Stop)

MBVG-G (Gripper)

Part Number	Holding Height (*)	W	W ₁	H	M	L	w ₂	Weight (g)	Selling Unit
MBVG1913G	1.5~1.9	19.1	12.7	6.4	M5×0.8 - 8L	5.5	4	24	2 pcs. as a set
MBVG1919G	1.5~3.0		19.1	7.9	M5×0.8 -12L	8		42	
MBVG1925G			25.4	12.7	M8×1.25-16L	12		60	
MBVG2525G	1.5~5.6	25.4						60	1 pc.

(*) The Holding height depends on the depth of the mounting slot.

Type	Body
MBVG-G	SKD12 Steel Quenched & tempered Black oxide finished HRC52~54
MBVG-S	SKD12 Steel Quenched & tempered Black oxide finished

MBVG-S (Stop)

Part Number	Weight (g)	Selling Unit
MBVG1913S	8	1 pc.

Notes:

- Use as locating stops for workpieces with hardness of HRC40 or less.
- The amount of bite of the gripper varies depending on the material and heat treatment etc. of workpieces. Ensure that the gripper edge is biting into the workpieces before machining.

Features:

- The sharp edge of the gripper bites into workpieces and holds powerfully.
- Suitable for use as a gripper for vise jaws and a stop of special fixtures.
- Grippers allows you to perform aggressive machining operations while holding on as little as 1.5mm.



Can be used as stops for **MBSC** Low-Profile Clamps. (Larger sizes than MBSC06 are recommended)

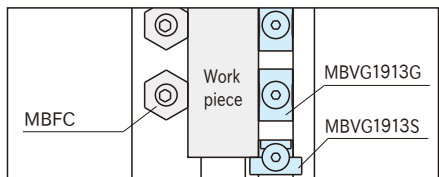


For locating stops of multiple workpieces

How To Use

Mounting-Slot Dimensions

Part Number	W ₂	H ₁
MBVG1913S	12.7 ^{+0.075} _{-0.025}	5.0
MBVG1913G		4.4~ 4.8
MBVG1919G	19.1±0.025	4.9~ 6.4
MBVG1925G		
MBVG2525G	25.4 ^{+0.075} _{-0.025}	7.1~11.2



MBVG1913S is designed for use in combination with MBVG1913G.