

FIP, FIPS

FLANGED IDLE SPROCKETS

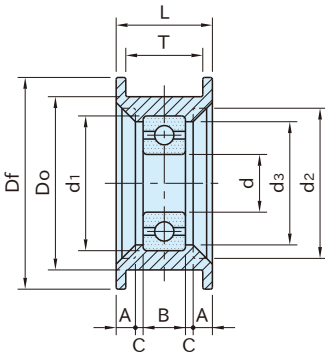


FIP
(Plastic)

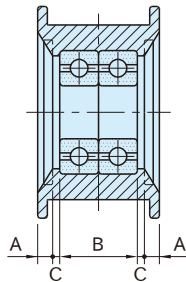


FIPS
(Steel)

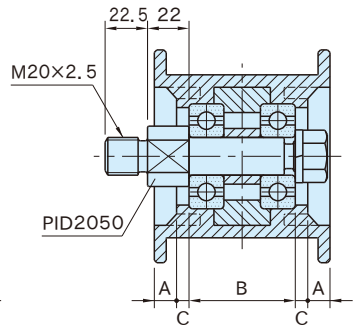
Type	Body	Bearing	Retaining Ring
FIP	Glass-fiber reinforced polyamide plastic Black	Steel	-
FIPS	Steel (S45C) Electroless nickel plated finish		Steel



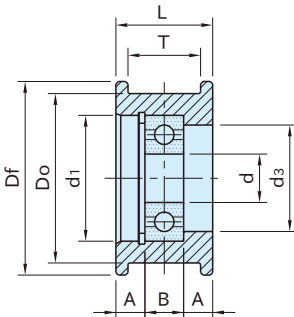
FIP 0825~2550 (Plastic)



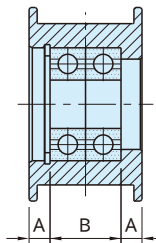
FIP 3050~5560 (Plastic)



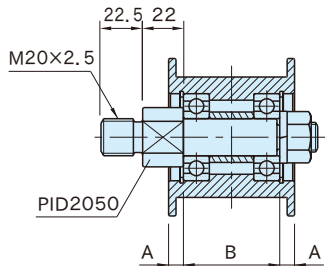
FIP 6065,8080 (Plastic)



FIPS 1535~2550 (Steel)



FIPS 3050~5560 (Steel)



FIPS 6065 (Steel)

FIP (Plastic)

Part Number	Do	Df	T	d	B	L	d ₁	d ₂	d ₃	A	C	Bearing	Weight (g)	Proper Idler Pin
FIP0825	25	30	7.5	6	6	12	17	20	15	1.5		606ZZ	20	PID0606
FIP1130	30	35	10.5	8	7	15	22	25	20	2.5	1.5	608ZZ	25	PID0807
FIP1535	35	40	14.5	10	8	20	26	30	24	4.5		6000ZZ	30	PID1008
FIP2045	44.5	55	19			24.5		39	32				70	PID1511
FIP2055	55	65				25		47		5	2		90	
FIP2065	65	75	19.5	15	11		35	53	33			6202ZZ	110	
FIP2075	74	84.5	19			24.5		66		3	4		120	
FIP2550	49.5	60	24			30		41	32	4.5	5		90	
FIP3050	49.5	60	29					41	32	4	2		130	
FIP3075	75	85	27	15	22	34.5	35	65	33	5	1	6202ZZ×2	140	PID1522
FIP4550	49.5	60	44			49		41	32	10	3.5		180	
FIP5560	60	70	54		28	60		52	43	12			320	PID2028
FIP6065	65	85	60	20		70	47	55		5	4	6204ZZ×2	990	PID2050(included)
FIP8080	80	100	80		52	92		70	44	15	5		1460	

FIPS (Steel)

Part Number	Do	Df	T	d	B	L	d ₁	d ₃	A	Bearing	Weight (g)	Proper Idler Pin
FIPS1535	35	40	15	10	8	20	26	22	6	6000ZZ	105	PID1008
FIPS2045	45	55	20			25		7		6202ZZ	240	PID1511
FIPS2550	50	60	24	15	11	30	35	28	9.5		340	
FIPS3050			30			35			6.5		400	PID1522
FIPS3550	50	60	34	15	22	39	35	28	8.5	6202ZZ×2	450	
FIPS4550			44			49			13.5		790	
FIPS5560	60	70	54	20	28	60	47	40	16	6204ZZ×2	830	PID2028
FIPS6065	65	85	60		52	68			8		1700	PID2050(included)

Features

- Can be used in flat-belt or timing-belt applications.
- **FIP** type is available with moulded-in ball bearing.
- The ball bearing of **FIPS** types is locked by a retaining ring.

Furnished With

FIP 6065, **FIP** 8080, **FIPS** 6065
Idle Pulleys come with a **PID** 2050 Idler Pin

Reference

- TENSIONER ASSEMBLY EXAMPLES

Technical Information

Allowable Bearing Radial Loads (N) (for 3,000 hours of average service life)

Bearing	Speed (min ⁻¹)							
	100	500	1000	1500	2000	2500	3000	3500
606ZZ	680	390	310	270	250	230	210	200
608ZZ	990	580	460	400	360	340	320	300
6000ZZ	1370	1090	640	560	500	470	440	420
6202ZZ	2310	1350	1080	940	850	790	740	710
6202ZZ×2	3740	2180	1740	1520	1370	1280	1200	1140
6204ZZ×2	6240	3650	2900	2530	2300	2130	2010	1910