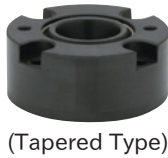


CP735

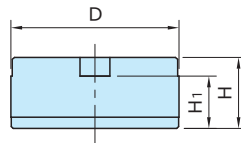
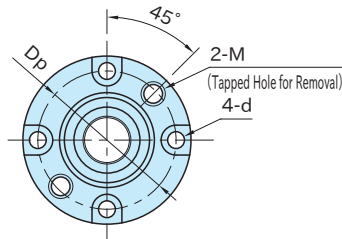
ONE-TOUCH FLEX LOCATOR BUSHINGS



(Tapered Type)



(Straight Type)



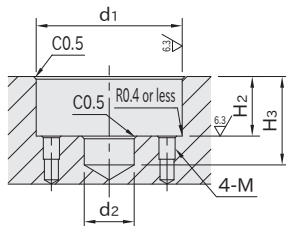
Type	Body	Tapered Bushing
CP735-L	SCM440 steel Black oxide finished	SCM440 steel Nitrocarburized
CP735-S	Quenched & tempered	—

Part Number	Type	D (g6)	H	d	H ₁	D _p	M	Lifting Force (N)*	Weight (g)
CP735-0939L	Tapered	38	15	4.5	10	30	M5×0.8	300	100
CP735-0939S	Straight							—	101
CP735-1246L	Tapered	45	19	4.5	14	37	M6×1	450	179
CP735-1246S	Straight							—	184
CP735-1656L	Tapered	55	24	5.5	18	45	M6×1	680	337
CP735-1656S	Straight							—	341

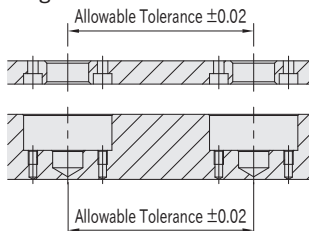
*) The lifting force is the power of the inner spring of the body to push up the movable tapered bushing.

How To Use

■ Mounting Hole Dimension



■ Spacing Tolerance



Size	d ₁ (H7)	H ₂ (±0.05)	d ₂	H ₃	M
CP735-0939	38	15.5	13	23	M4×0.7
CP735-1246	45	19.5	16	28	M4×0.7
CP735-1656	55	24.5	20	34	M5×0.8

Related Product

- [CP730](#) ONE-TOUCH FLEX LOCATOR CLAMPERS (Hexagon Head)
- [CP731](#) ONE-TOUCH FLEX LOCATOR CLAMPERS (Cam Handle)
- [CP735-P](#) ONE-TOUCH FLEX LOCATOR (PROTECTING COVERS)

Reference

How To Use ONE-TOUCH FLEX LOCATORS (Hexagon Head / Cam Handle)