

CJC,CJR

JOINT FORKS



ELESA : FJT. **elsa**



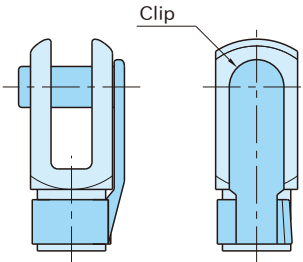
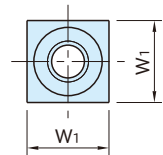
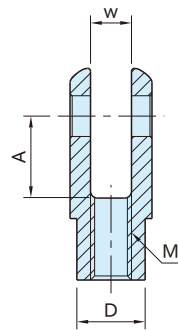
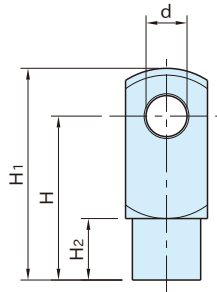
CJC

(Clip Style)



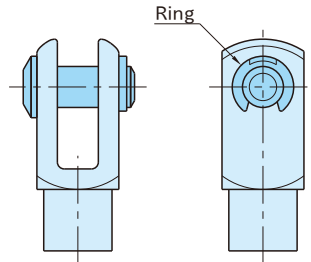
CJR

(Ring Style)



CJC

(Clip Style)



CJR

(Ring Style)

Body
Polyamide (glass-fiber reinforced) Black

Type/Size	d	w	M	A	H	H ₁	H ₂	D	W ₁
CJC	6	6	M 6×1	12	24	31	9	10	12
	8	8	M 8×1.25	16	32	42	12	14	16
CJR	10	10	M10×1.5	20	40	52	15	18	20
	10F		M10×1.25						
	12	12	M12×1.75	24	48	62	18	20	24
	12F		M12×1.25						
14	14	M14×2	28	56	72	22.5	24	27	

CJC (Clip Style)

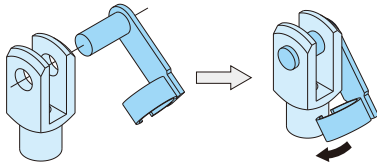
Part Number	Weight (g)
CJC06-M06	4
CJC08-M08	9
CJC10-M10	16
CJC10-M10F	
CJC12-M12	28
CJC12-M12F	
CJC14-M14	42

CJR (Ring Style)

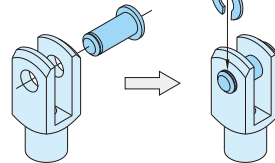
Part Number	Weight (g)
CJR06-M06	3
CJR08-M08	8
CJR10-M10	15
CJR10-M10F	
CJR12-M12	25
CJR12-M12F	
CJR14-M14	41

Features:

- Suitable for high-speed applications
- Highly corrosion-resistant and usable in liquids.
- Can minimize noise and dampen vibrations.
- Two options of pin-fixing styles : clip and ring

How To Use**CJC** (Clip Style)

Insert the pin into the pin holes and then snap on the clip.

CJR (Ring Style)

Insert the pin into the pin holes and then fix the pin with the retaining ring.

The retaining ring should be installed with the prong turned out.

Technical Information

Working temperature: -30°C to 80°C

Mechanical Strength

Size	Max. Allowable Static Radial Load		Max. Allowable Axial Load	
	Short Term (N)	Long Term (N)	Short Term (N)	Long Term (N)
06	1,300	650	300	150
	2,100	1,050	650	325
10	3,000	1,500	800	400
10F				
12	3,500	1,750	900	450
12F				
14	6,100	3,050	1,000	500

