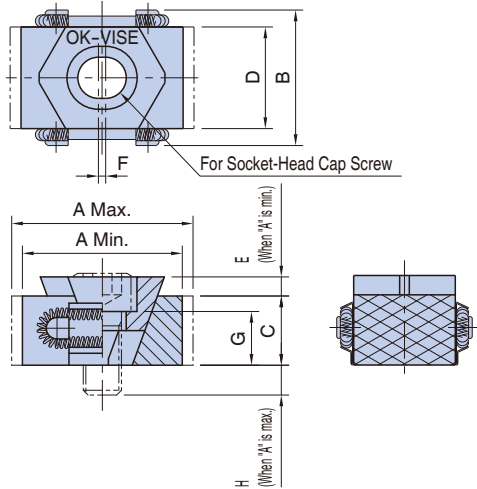


BK2 / DK2 / FK2

OK-VISE CLAMPS, SINGLE WEDGE / MACHINABLE JAWS



[Body]

Material : SKD61 steel
 Heat treat : Quenched and tempered
 Hardness: Rc48-52

[Jaw]

Material : SKD61 steel
 Heat treat : Quenched and tempered
 Finish : Black oxide
 Hardness: Rc48-52

[Spring]

Material : SUS302 Stainless steel

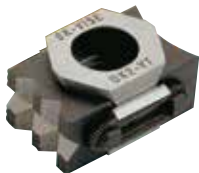
[Retaining Plate]

Material : SUS301 stainless steel

Part Number	A		B	C	D	E	F	G	
	Min.	Max.						When "A" is max.	When "A" is min.
BK2-VT+3	33	37	29	15	21	2.5	1	4	10
DK2-VT+5	52	59	41	22	30	4	2	5	14
FK2-VT+5	67	75	56	29	42	5	3	8	19

Part Number	H		Socket-Head Cap Screw		Clamping Force (N)	Allowable Screw Torque (N·m)	Weight (g)
	T-Slot Mounting	Tapped-Hole Mounting	T-Slot Mounting	Tapped-Hole Mounting			
BK2-VT+3	16	16	M 8-20L	M 8-20L	13,000	20	70
DK2-VT+5	25	20	M12-30L	M12-25L	25,000	90	235
FK2-VT+5	32	27	M16-40L	M16-35L	54,000	200	550

Feature:



Note:

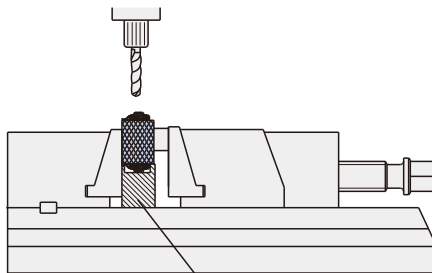
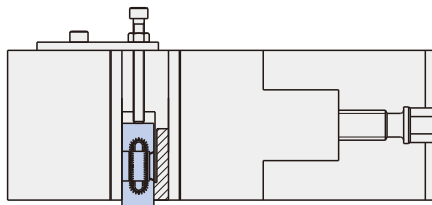
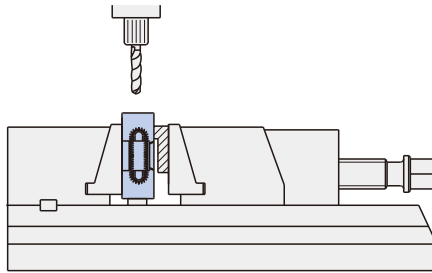
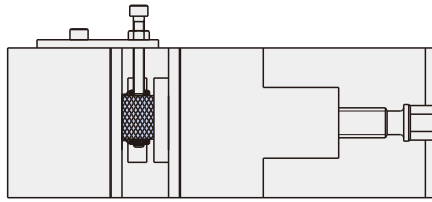
The jaw of BK2-VT+3 clamps is not serrated.

Application Example

Refer to the "Application Examples" page.

The jaws are machinable for custom machining to adapt them to your application.

How To Machine Jaws



Provide a relief on the top of the support for the spring section.

Jaws may be machined in disassembly.