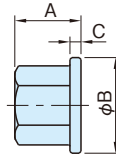
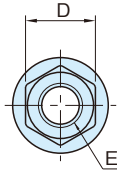


**BJ740****FLANGE NUTS**

Steel



Stainless Steel



Type	Body
BJ740-06~20	Steel(S45C) Quenched and tempered Black oxide finish Heat treated to HRC33-39
BJ740-24	Steel Black oxide finish
BJ740-SUS	Stainless Steel(SUS316)

Steel	Stainless Steel	A	B	C	D	E	weight (g)
Part Number	Part Number						
<b>BJ740-06001</b>	<b>BJ740-06001-SUS</b>	9	13	2	10	M 6×1	6
<b>BJ740-08001</b>	<b>BJ740-08001-SUS</b>	12	18	2.5	13	M 8×1.25	11
<b>BJ740-10001</b>	<b>BJ740-10001-SUS</b>	15	22	3	17	M10×1.5	24
<b>BJ740-12001</b>	<b>BJ740-12001-SUS</b>	18	26		19	M12×1.75	34
<b>BJ740-16001</b>	-	24	32	4	24	M16×2	67
<b>BJ740-20001</b>	-	30	40		30	M20×2.5	126
<b>BJ740-24001</b>	-	36	45	6	36	M24×3	230