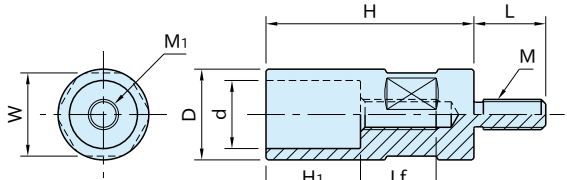


BJ530

HOOK-CLAMP HOLDERS



- | | | |
|----------|----------|----------|
| BJ530-04 | BJ530-08 | BJ530-10 |
| BJ530-06 | BJ530-12 | BJ530-16 |

Body
S45C steel
Black oxide finish

Part Number	H	D	d*)	H ₁	M ₁	L _f	M	L	W	Allowable Screw Torque(N·m)	Weight (g)
BJ530-04035	35	14	10	16	M 4×0.7	13	M 6×1	11	12	2.7	30
BJ530-06040	40	16	12	19	M 6×1	14	M 8×1.25	14	13	7	45
BJ530-08055	55	24	18	25	M 8×1.25	20	M 8×1.25	19	22	30	140
BJ530-10063	63	32	20	30	M10×1.5	21	M12×1.75	30	30	38 (32 ^{**})	400
BJ530-10080	80					23					500
BJ530-12080	80	40	25	40	M12×1.75	25	M12×1.75	30	36	50 (46 ^{***})	600
BJ530-12100	100										800
BJ530-16080	80	50	32	40	M16×2	25	M16×2	30	46	80	930
BJ530-16100	100										1230

*) Tolerances of d Diameter

BJ530-04 | BJ530-06 : $^{+0.1}$

BJ530-08 | BJ530-10 | BJ530-12 | BJ530-16 : F7

**) The value to use with BJ130-10040.

***) The value to use with BJ130-12060 or BJ130-12160.

Note

The above screw torque values are effective for installation of BJ130 | BJ132 Hook Clamps.

How To Use

