

# BJ351

# CYLINDRICAL WORK SUPPORTS



**BJ351**

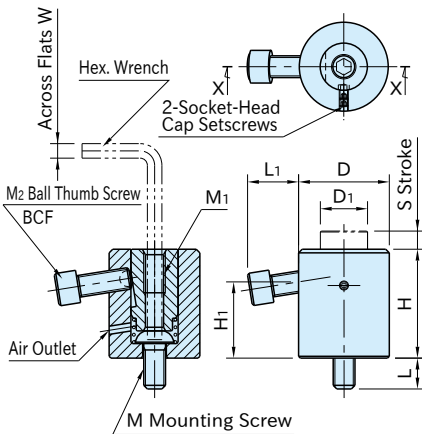
(Ball-Thumb-Screw Style)



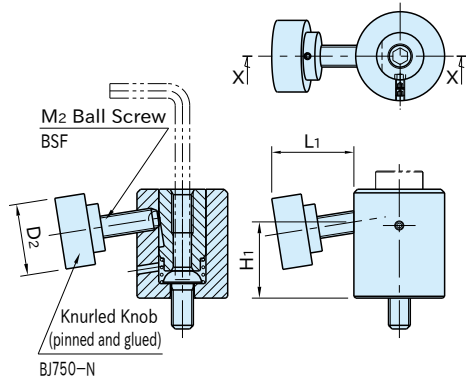
**BJ351-C**

(Knurled-Knob Style)

Body	Piston
S45C steel Black oxide finish	SK95 steel Quenched and tempered Black oxide finish



Section X-X



Section X-X

Note: To install, insert a hex. wrench through the piston into the mounting screw.

**BJ351**

(Ball-Thumb-Screw Style)

**BJ351-C**

(Knurled-Knob Style)

Size	H	S	M <sub>1</sub>	D <sub>1</sub>	D	M	L	W	H <sub>1</sub>	
<b>BJ351</b>	<b>06001</b>	33	10	M 6×1 Depth 12	14	28	M 6×1	10	4	22
	<b>08001</b>	42		M 8×1.25 Depth 16	19	35	M 8×1.25	15	5	28.5
<b>BJ351-C</b>	<b>10001</b>	50		M10×1.5 Depth 20	22	42	M10×1.5	14	6	34
<b>12001</b>	60	M12×1.75 Depth 24		26	50	M12×1.75	17	8	42	
<b>16001</b>	70	M16×2 Depth 32		33	60	M16×2	22	10	47	

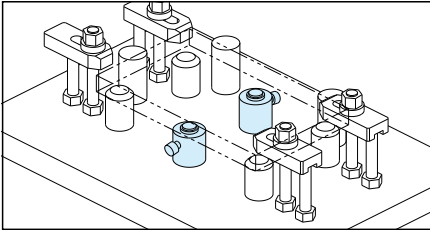
**BJ351** (Ball-Thumb-Screw Style)

Part Number	L <sub>1</sub>	M <sub>2</sub>	Allowable Screw Torque (N·m)	Support Capacity (kN)	Piston Spring Force (N)	Weight (g)
<b>BJ351-06001</b>	14.1	M 6×1 -16L	7.5	4	10~22	150
<b>BJ351-08001</b>	18.8	M 8×1.25-20L	14	6	10~27	310
<b>BJ351-10001</b>	23.8	M10×1.5 -25L	18	7.5	14~28	530
<b>BJ351-12001</b>	28.5	M12×1.75-30L	22	9	15~30	895
<b>BJ351-16001</b>	26.5		25		15~35	1475

**BJ351-C** (Knurled-Knob Style)

Part Number	L <sub>1</sub>	D <sub>2</sub>	M <sub>2</sub>	Allowable Screw Torque (N·m)	Support Capacity (kN)	Piston Spring Force (N)	Weight (g)
<b>BJ351-06001C</b>	22.7	24	M 6×1	1	0.6	10~22	185
<b>BJ351-08001C</b>	27.7	30	M 8×1.25	1.2	0.7	10~27	360
<b>BJ351-10001C</b>	31.8	36	M10×1.5	1.5		14~28	620
<b>BJ351-12001C</b>	36.8	40	M12×1.75	2	0.8	15~30	1020

**How To Use**



**Feature**

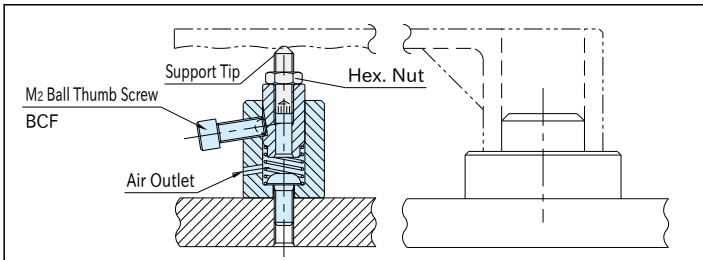
The positive locking mechanism allows the ball-thumb-screw style to offer high support capacities.

**Note**

When you attach a support tip to the tapped hole through the shaft, tighten the shaft and fix it to prevent damage.

**Reference**

**BJ650** REMOTE-CONTROL UNITS



Ideal for preventing the workpiece from chattering and deflecting.