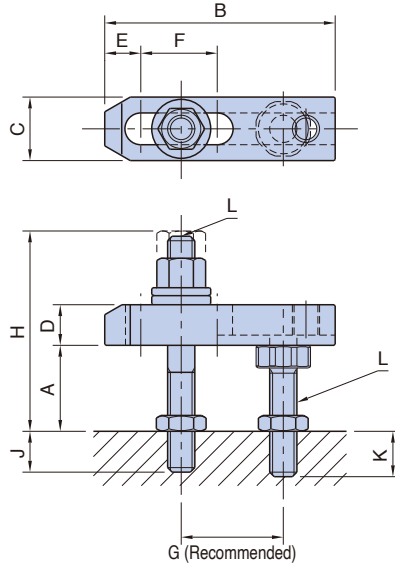


BJ153-A

TAPER-NOSE CLAMP ASSEMBLIES, A Type



[Stud]

Material : SCM435 steel
Heat Treat : Quenched and tempered
Finish : Black oxide

[Others]

Material : S45C steel
Heat Treat : Quenched and tempered
Finish : Black oxide

Part Number	A	B	C	D	E	F	G	H	J	K	L	Clamping Force (N) At Max. - Min. End Projection	Allowable Screw Torque (N·m)	Weight (kg)					
								Max.											
BJ153-08040A1	15 - 25	40	19	12	10	6	20	51	12	22 - 12	M 8x1.25	5,900 - 7,100	17	0.12					
BJ153-08040A2	20 - 35							66	14	27 - 12					0.14				
BJ153-08050A1	15 - 25	50			12	14		20	51	12		22 - 12		4,600 - 6,600	0.13				
BJ153-08050A2	20 - 35								66	14		27 - 12				0.15			
BJ153-08063A1	15 - 25	63			27	51		12	22 - 12	66		14		27 - 12	3,600 - 6,600	0.14			
BJ153-08063A2	20 - 35																66	14	27 - 12
BJ153-10050A1	20 - 30	50			25	12		12	8	25		62		18	20 - 10	M10x1.5	9,400 - 11,500	34	0.21
BJ153-10050A2	25 - 45											80		20	30 - 10				
BJ153-10063A1	20 - 30	63	18	62			18	20 - 10	80		20	30 - 10	7,300 - 10,600	0.23					
BJ153-10063A2	25 - 45														80		20		30 - 10
BJ153-10080A1	20 - 30	80	32	30			63	18	20 - 10		80	20	30 - 10	8,800 - 15,000	45		0.3		
BJ153-10080A2	25 - 45																		80
BJ153-10100A1	20 - 30	100	15	40			40	63	18		20 - 10	80	20	30 - 10	9,500 - 16,400		0.35		
BJ153-10100A2	25 - 45																		80
BJ153-10125A1	20 - 30	125	50	55	63	18	20 - 10	80	20	30 - 10	10,300 - 17,700	0.41							
BJ153-10125A2	25 - 45												80	20	30 - 10	0.43			

Part Number	A	B	C	D	E	F	G	H	J	K	L	Clamping Force (N) At Max. - Min. End Projection	Allowable Screw Torque (N·m)	Weight (kg)
								Max.						
BJ153-12063A1	20 - 40	63	32	16	14	14	30	80	20	33 - 13	M12x1.75	15,300 - 20,200	71	0.38
BJ153-12063A2	45 - 55							101	24	23 - 13				0.42
BJ153-12080A1	20 - 40	80			25	80		20	33 - 13	11,800 - 17,800		0.43		
BJ153-12080A2	45 - 55							101	24			23 - 13		0.47
BJ153-12100A1	20 - 40	100		20	40	35	80	20	33 - 13	12,300 - 21,200	80	0.54		
BJ153-12100A2	40 - 55						101	24	28 - 13			0.58		
BJ153-12125A1	20 - 40	125	19	50	50	80	20	33 - 13	13,900 - 23,800	0.63				
BJ153-12125A2	40 - 55					101	24	28 - 13		0.67				
BJ153-12160A1	20 - 40	160		60	75	80	20	33 - 13	16,100 - 26,300	0.76				
BJ153-12160A2	40 - 55					101	24	28 - 13		0.8				
BJ153-16080A1	25 - 35	80	38	19	18	17	40	81	20	28 - 18	M16x2	14,700 - 24,800	115	0.72
BJ153-16080A2	35 - 50							96	30	33 - 18				0.77
BJ153-16100A1	25 - 35	100			30	87		20	28 - 18	15,400 - 24,800		129		0.94
BJ153-16100A2	35 - 50							102	24					33 - 18
BJ153-16125A1	25 - 35	125		25	45	50	87	20	28 - 18	16,100 - 26,900	1.07			
BJ153-16125A2	35 - 50						102	24	33 - 18		1.12			
BJ153-16160A1	25 - 35	160	65	65	87	20	28 - 18	16,900 - 29,100	1.25					
BJ153-16160A2	35 - 50				102	24	33 - 18		1.3					
BJ153-20160A1	45 - 70	160	50	25	32	60	60	130	36	45 - 20	M20x2.5	18,100 - 29,800	183	2
BJ153-20200A1		200				80	80					19,100 - 32,700		2.3