

BJ100 (Heavy)

PIVOTING SIDE CLAMPS



[Body]

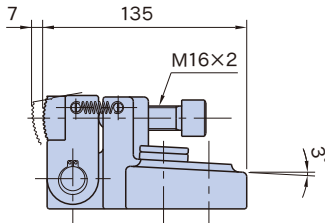
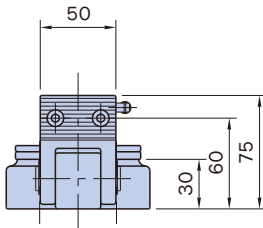
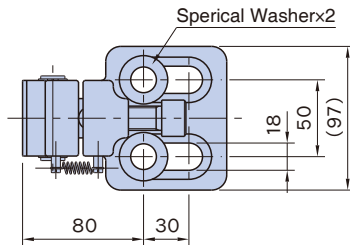
Material : FCD450 cast iron
Finish : Black Powder baking

[Jaw]

Material : S50C steel
Heat treat : Quenched and tempered
Finish : Black oxide

[Bolt]

Material : SCM435 steel
Heat treat : Quenched and tempered
Induction hardened on the end
Finish : Black oxide



Part Number	Clamping Force (N)	Allowable Screw Torque (N·m)	Weight (kg)
BJ100-16060	58,000	150	2.9

2 spherical washers for both M12 and M16 screws are included.