



(Tapered Type)

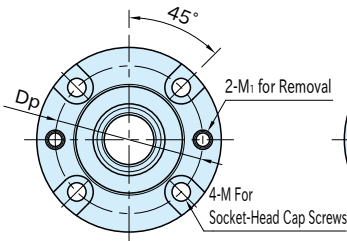
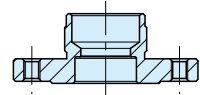
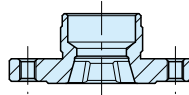
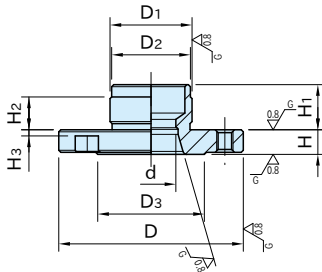


(Diamond Type)

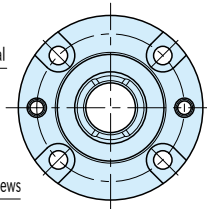


(Straight Type)

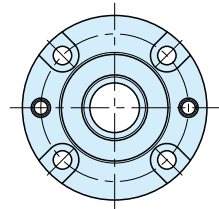
Body
SCM440 steel
Quenched & tempered
Black oxide finish
Precision ground



AMWF-BU-T
(Tapered Type)



AMWF-BU-D
(Diamond Type)



AMWF-BU-S
(Straight Type)

Size	D ₁ (g6)	H ₂	D ₂	H ₁	M	H ₃	D	D ₃	H (±0.003)	d (^{+0.15} / _{+0.05})	M ₁	D _p
AMWF-BU-T	40	28	10	27.5	15	M5	60	38	8	16	M5×0.8	50
AMWF-BU-D												
AMWF-BU-S												
	50	36	14	35.5	19	M6	75	48	10	20	M6×1	62

AMWF-BU-T (Tapered Type)

Part Number	Weight (g)
AMWF40-BU-T	160
AMWF50-BU-T	323

AMWF-BU-D (Diamond Type)

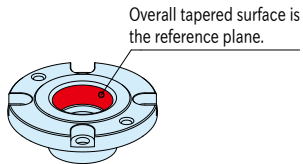
Part Number	Weight (g)
AMWF40-BU-D	159
AMWF50-BU-D	322

AMWF-BU-S (Straight Type)

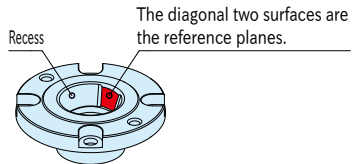
Part Number	Weight (g)
AMWF40-BU-S	163
AMWF50-BU-S	330

Feature**Function**

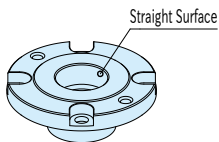
Locating with Tapered Type
For setting reference position



Locating with Diamond Type
For locating reference at rotational direction



Clamping with Straight Type

**Related Product**

- **AMWF-W** PNEUMATIC CLAMPING LOCATORS
- **CP74T** PRECISION ONE-TOUCH CLAMPING LOCATORS

Reference

- How To Use PNEUMATIC FLEX LOCATORS
- How To Install PNEUMATIC FLEX LOCATORS
- How To Use PRECISION ONE-TOUCH CLAMPING LOCATORS