

# MHS, MCT, MFSC 倾斜齿面压块



★ One Point  
MCT, MFSC:  
超合金衬垫型



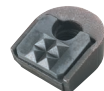
MHS-127-4



MHS-127-12



MHS-130-4



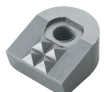
MCT-127-4



MCT-127-12



MCT-130-4



MFSC-127-4

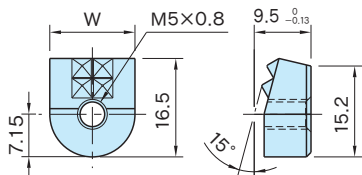


MFSC-127-10

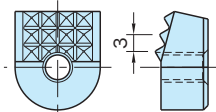


MFSC-130-4

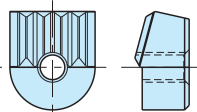
类型	本体	衬垫
MHS	SKH51 淬火回火 四氧化三铁膜 HRC62	
MCT	SKH51 淬火回火 四氧化三铁膜 HRC62	超合金 HRC72
MFSC		超合金 HRC72



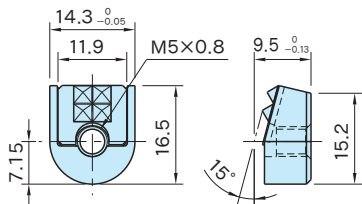
MHS-127-4, -127-4-10



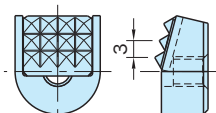
MHS-127-12



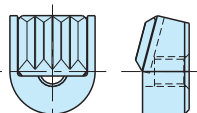
MHS-130-4



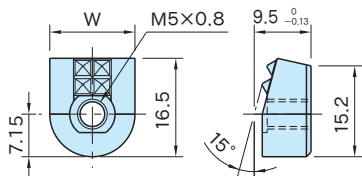
MCT-127-4



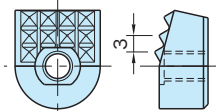
MCT-127-12



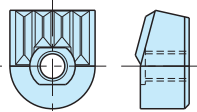
MCT-130-4



MFSC-127-4, -127-4-10



MFSC-127-10



MFSC-130-4

## MHS

型号	W ( $\pm 0.05$ )	质量 (g)
MHS-127-4-10	10	7
MHS-127-4	14.3	11
MHS-127-12		12
MHS-130-4		

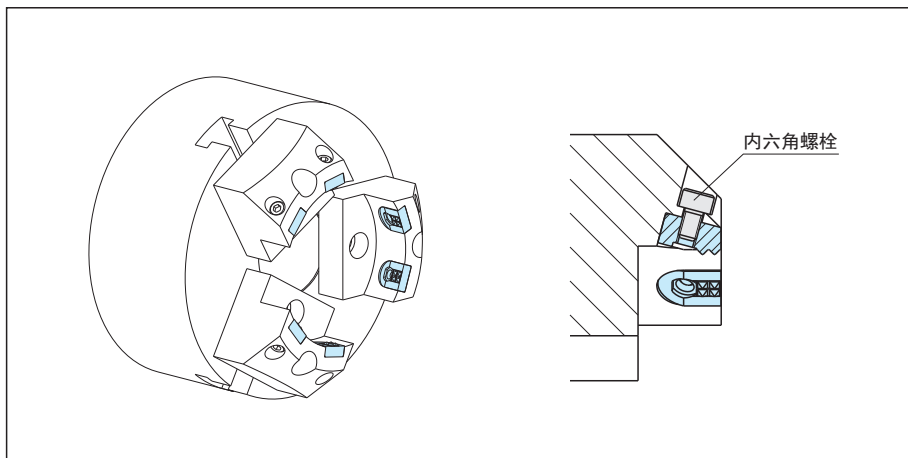
## MCT

型号	质量 (g)
MCT-127-4	12
MCT-127-12	13
MCT-130-4	

## MFSC

型号	W ( $\pm 0.05$ )	质量 (g)
MFSC-127-4-10	10	13
MFSC-127-4	14.3	20
MFSC-127-10		
MFSC-130-4		

## 使用示例及使用方法



在卡盘上使用时，请安装在卡盘爪部接触工件的部位。