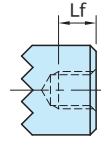
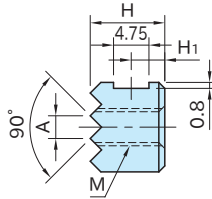
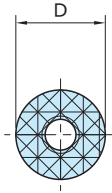
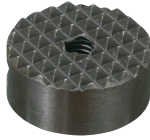


# HS

## HS·齿面压块(圆型)



**Fairlane**



本体
SKH51
淬火回火
四氧化三铁膜
HRC62

HS 100~252

HS 060~082

型号	D ( $\begin{smallmatrix} 0 \\ -0.13 \end{smallmatrix}$ )	H ( $\begin{smallmatrix} 0 \\ -0.13 \end{smallmatrix}$ )	M	H <sub>1</sub>	L <sub>f</sub>	A	质量 (g)
HS-060	6	10	M3×0.5	-	5	1.6	2
HS-062		12			7		3
HS-080	8	10	M4×0.7	-	5	1.6	3
HS-082		12			7		4
HS-100	10	10	M5×0.8	4.5	-	2.3	5
HS-102		12		6			6
HS-120	12	10	M5×0.8	4.5	-	3	8
HS-122		12		6			9
HS-160	16	10	M6×1	4.5	-	3	14
HS-162		12		6			15
HS-200	20	10	M6×1	4.5	-	3	23
HS-202		12		6			25
HS-250	25	10	M6×1	4.5	-	3	37
HS-252		12		6			40