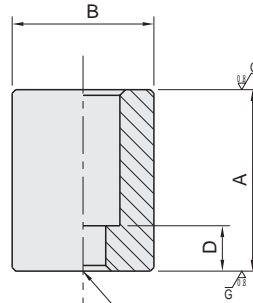


**BJ300****SUPPORT CYLINDERS**

Material:S45C steel  
Heat treated  
Black oxide finish  
Precision ground  
Hardness:RC39 - 45



For C- Socket-Head Cap Screw

Part Number	A ( $\pm 0.01$ )	B	C	D	Weight (g)	
<b>BJ300-08016</b>	16	25	M 8	7	47	
<b>BJ300-08020</b>	20				58	
<b>BJ300-08025</b>	25				71	
<b>BJ300-08032</b>	32				89	
<b>BJ300-08040</b>	40				110	
<b>BJ300-08050</b>	50				136	
<b>BJ300-10020</b>	20	32	M10	9	97	
<b>BJ300-10025</b>	25				120	
<b>BJ300-10032</b>	32				151	
<b>BJ300-10040</b>	40				186	
<b>BJ300-10050</b>	50				229	
<b>BJ300-10063</b>	63				287	
<b>BJ300-12020</b>	20	40	M12	7	160	
<b>BJ300-12025</b>	25			200		
<b>BJ300-12032</b>	32			260		
<b>BJ300-12040</b>	40			330		
<b>BJ300-12050</b>	50			420		
<b>BJ300-12063</b>	63			530		
<b>BJ300-12080</b>	80			660		
<b>BJ300-12100</b>	100			840		
<b>BJ300-12125</b>	125			1,050		
<b>BJ300-16025</b>	25			50	M16	8
<b>BJ300-16032</b>	32	390				
<b>BJ300-16040</b>	40	500				
<b>BJ300-16050</b>	50	630				
<b>BJ300-16063</b>	63	810				
<b>BJ300-16080</b>	80	1,000				
<b>BJ300-16100</b>	100	1,260				
<b>BJ300-16125</b>	125	1,600				
			35			

Modular  
Fixture Bases

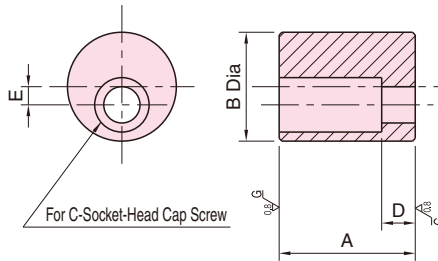
Blank  
Fixture Bases

Quick-Change  
Fixture Bases

Standard  
Fixture Parts

Modular  
Fixture Parts

One-Touch  
Clamps

**BJ301****ECCENTRIC SUPPORT CYLINDERS**

Material : S45C steel

Heat Treat : Quenched and tempered (Rc39 - 45)

Finish : Black oxide

Precision ground

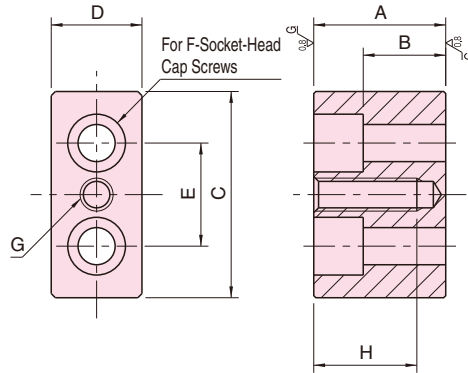
Part Number	A (±0.01)	B	C	D	E	Weight (g)
<b>BJ301-12020</b>	20	40	M12	7	7	160
<b>BJ301-12025</b>	25			200		
<b>BJ301-12032</b>	32			260		
<b>BJ301-12040</b>	40			330		
<b>BJ301-12050</b>	50			420		
<b>BJ301-12063</b>	63			530		
<b>BJ301-12080</b>	80			660		
<b>BJ301-12100</b>	100			840		
<b>BJ301-12125</b>	125			1,050		
<b>BJ301-16025</b>	25	50	M16	8	10	350
<b>BJ301-16032</b>	32			390		
<b>BJ301-16040</b>	40			500		
<b>BJ301-16050</b>	50			630		
<b>BJ301-16063</b>	63			810		
<b>BJ301-16080</b>	80			1,000		
<b>BJ301-16100</b>	100			1,260		
<b>BJ301-16125</b>	125			1,600		

**Feature:**

Provides additional adjustment of supporting position to avoid interference with tools.

# BJ310

# SUPPORT BLOCKS



Material : S45C steel

Heat Treat : Quenched and tempered (Rc 39 - 45)

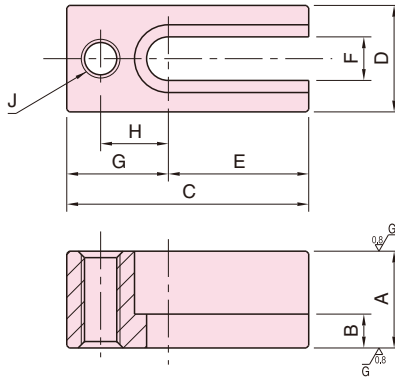
Finish : Black oxide

Precision ground

Part Number	A (±0.01)	B	C	D	E	F	G	H	Weight (kg)
<b>BJ310-08016</b>	16	7	50	22	25	M 8	M 8x1.25	Through	0.1
<b>BJ310-08020</b>	20								0.13
<b>BJ310-08025</b>	25								0.16
<b>BJ310-08032</b>	32	20	50	22	25	M 8	M 8x1.25	25	0.22
<b>BJ310-08040</b>	40								0.27
<b>BJ310-08050</b>	50								0.33
<b>BJ310-12020</b>	20	7	100	50	50	M12	M12x1.75	Through	0.67
<b>BJ310-12025</b>	25	12							0.86
<b>BJ310-12032</b>	32	19							1.11
<b>BJ310-12040</b>	40	27	100	50	50	M12	M12x1.75	35	1.41
<b>BJ310-12050</b>	50	37							1.77
<b>BJ310-12063</b>	63								2.25
<b>BJ310-12080</b>	80		100	50	50	M16	M16x2	Through	2.87
<b>BJ310-12100</b>	100	3.61							
<b>BJ310-12125</b>	125	4.52							
<b>BJ310-16025</b>	25	8	100	50	50	M16	M16x2	Through	0.77
<b>BJ310-16032</b>	32	15							1.02
<b>BJ310-16040</b>	40	23							1.31
<b>BJ310-16050</b>	50	33	100	50	50	M16	M16x2	35	1.65
<b>BJ310-16063</b>	63	46							2.11
<b>BJ310-16080</b>	80								2.71
<b>BJ310-16100</b>	100		46	100	50	50	M16	M16x2	35
<b>BJ310-16125</b>	125	4.28							

# BJ321

# EXTENSION SUPPORTS



Material : S45C steel

Heat Treat : Quenched and tempered (Rc 39 - 45)

Finish : Black oxide

Precision ground

Part Number	A (±0.01)	B	C	D	E	F	G	H	J	Weight (g)
<b>BJ321-12001</b>	25	12	90	38	40	13	50	30	M12×1.75	550
<b>BJ321-12002</b>	32	19								700
<b>BJ321-12003</b>	40	27								900
<b>BJ321-12004</b>	50	37								1,100
<b>BJ321-12011</b>	25	12	140	38	90	13	50	30	M12×1.75	800
<b>BJ321-12012</b>	32	19								1,000
<b>BJ321-12013</b>	40	27								1,300
<b>BJ321-12014</b>	50	37								1,600
<b>BJ321-16001</b>	32	15	90	50	40	17	50	30	M16×2	820
<b>BJ321-16002</b>	40	23								1,000
<b>BJ321-16003</b>	50	33								1,300
<b>BJ321-16011</b>	32	15								1,200
<b>BJ321-16012</b>	40	23	140	50	90	17	50	30	M16×2	1,500
<b>BJ321-16013</b>	50	33								1,900

### Feature:

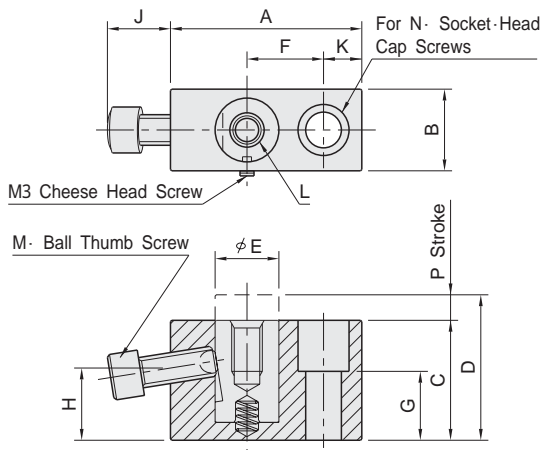
The slot allows minutely adjusting the mounting position. The tapped hole is ideal for positioning a component between grid points on a tooling grid plate or block.

## BJ350

## WORK SUPPORTS



- [Body]  
Material:S45C steel  
Black oxide finish
- [Piston]  
Material:SK95 steel  
Heat treated  
Black oxide finish

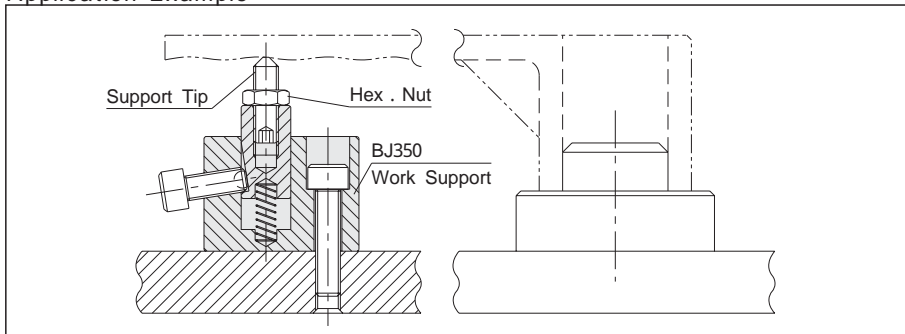


Part Number	A	B	C	D	E	F	G	H	J	K	L	
<b>BJ350-06001</b>	38	19	29	35	12	15	15	17.6	13	8	M 6 x 1	10 deep
<b>BJ350-08001</b>	50	22	37	47	16	20	20	21.1	16	10	M 8 x 1.25	15 deep
<b>BJ350-10001</b>	65	25	42	52	19	25	20	24.6	18.5	15	M10 x 1.5	15 deep
<b>BJ350-12001</b>	75	32	47	57	25	30	27	28.3	25	15	M12 x 1.75	20 deep

Part Number	M		N	P	Allowable Screw Torque (N·m)	Support Capacity (N)	Piston Spring Force (N)	Weight (g)
<b>BJ350-06001</b>	M 6 x 1	-16L	M 6	6	7.5	4,000	0 to 6	150
<b>BJ350-08001</b>	M 8 x 1.25	-20L	M 8	10	14	6,000	0 to 7	285
<b>BJ350-10001</b>	M10 x 1.5	-25L	M10	10	18	7,500	1 to 11	480
<b>BJ350-12001</b>	M12 x 1.75	-30L	M12	10	22	9,000	1 to 11	800

- The positive locking mechanism offers high support capacities .
- The above support capacity values are reached when the ball thumb screw is fully tightened .

## Application Example



Ideal for preventing the workpiece from chattering and deflecting .

**BJ351****WORK SUPPORT CYLINDERS**

[Body]

Material : S45C steel

Heat treat : Quenched and tempered

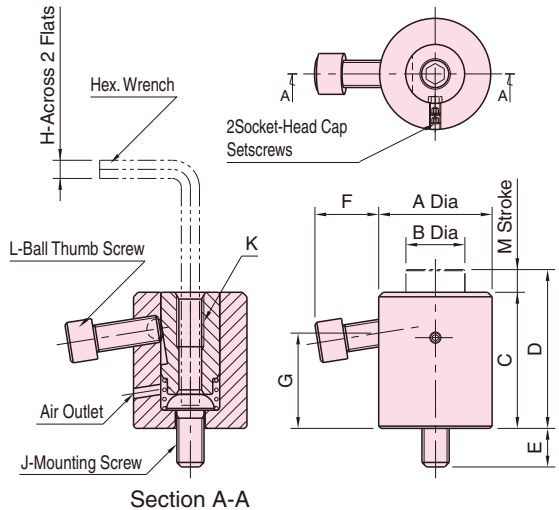
Finish : Black oxide

[Piston]

Material : SK95 steel

Heat treat : Quenched and tempered

Finish : Black oxide



To install, insert a hex. wrench through the piston into the mounting screw.

Part Number	A	B	C	D	E	F	G	H	J	K
<b>BJ351-06001</b>	28	14	33	39	10	13.1	22.2	4	M 6x1	M 6x1 12 deep
<b>BJ351-08001</b>	35	19	42	52	14	17.2	27.5	5	M 8x1.25	M 8x1.25 16 deep
<b>BJ351-10001</b>	42	22	50	60	14	24	34	6	M10x1.5	M10x1.5 20 deep
<b>BJ351-12001</b>	50	26	60	70	16	28.1	42.1	8	M12x1.75	M12x1.75 24 deep
<b>BJ351-16001</b>	60	33	70	80	22	26.6	47.4	10	M16x2	M16x2 32 deep

Part Number	L	M	Allowable Screw Torque (N·m)	Support Capacity (N)	Piston Spring Force (N)	Weight (g)
<b>BJ351-06001</b>	M 6x1 -16L	6	7.5	4,000	10 - 22	150
<b>BJ351-08001</b>	M 8x1.25 -20L	10	14	6,000	10 - 27	300
<b>BJ351-10001</b>	M10x1.5 -25L	10	18	7,500	14 - 28	540
<b>BJ351-12001</b>	M12x1.75 -30L	10	22	9,000	15 - 30	865
<b>BJ351-16001</b>	M12x1.75 -30L	10	25	9,000	15 - 35	1,390

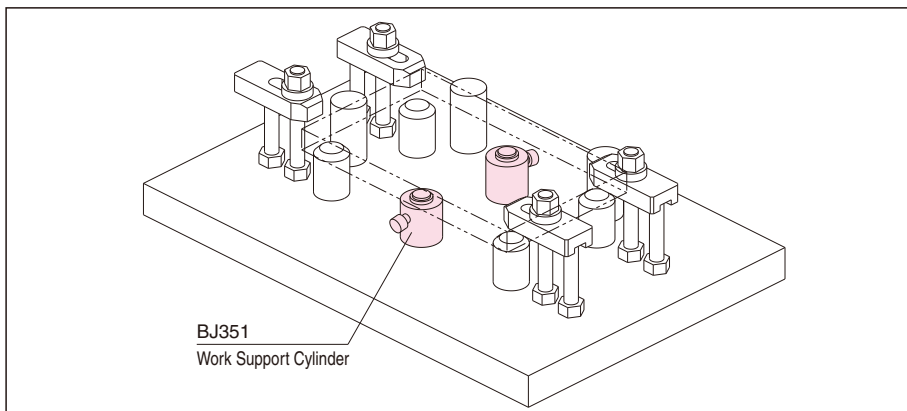
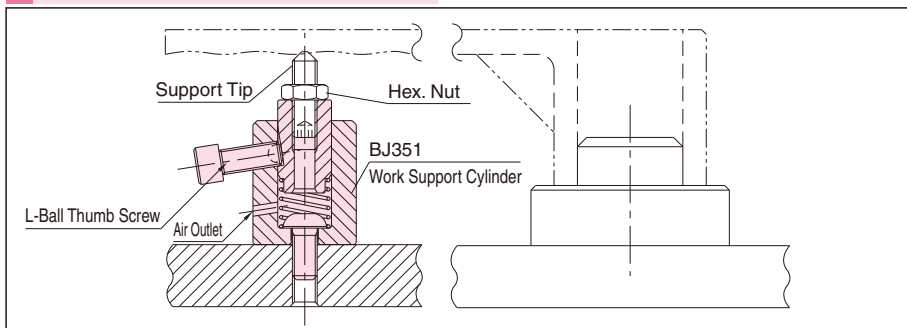
**Feature:**

The positive locking mechanism offers high support capacities.

**Note:**

The above support capacity values are reached when the ball thumb screw is fully tightened.

## How To Use



## BJ351-C

## LOW-PRESSURE SPRINGS FOR WORK SUPPORT CYLINDERS



Material : SWPA

Part Number	Work Support Cylinders	Piston Spring Force (N)
<b>BJ351-06001-C1</b>	<b>BJ351-06001</b>	3 - 7
<b>BJ351-08001-C1</b>	<b>BJ351-08001</b>	3 - 7
<b>BJ351-10001-C1</b>	<b>BJ351-10001</b>	5 - 9
<b>BJ351-12001-C1</b>	<b>BJ351-12001</b>	6 - 11
<b>BJ351-16001-C1</b>	<b>BJ351-16001</b>	7 - 14

## How To Use

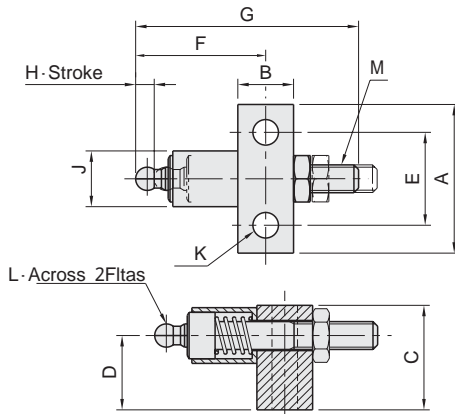
Replacement spring that allows setting piston spring force lower

## BJ650

## REMOTE-CONTROL UNITS



Material:S45C steel  
Finish :Black oxide



## Short

Part Number	A	B	C	D	E	F	G	H	J	K
<b>BJ650-06001</b>	32	12	22	16	20	30	48	4	12	5.5
<b>BJ650-08001</b>	32	12	27	19.2	20	34	57	4	15	5.5
<b>BJ650-10001</b>	44	16	32	22.2	30	45	76	5	18	9
<b>BJ650-12001</b>	44	16	36	25.2	30	50	86	5	20	9

Part Number	L	M	Work Supports	Weight (g)	Recommended Distance between Work Supprt and Remote-Control Unit A
<b>BJ650-06001</b>	5	M 6 x 1 -35L	BJ350-06001	75	66
<b>BJ650-08001</b>	6	M 8 x 1.25-40L	BJ350-08001	100	81
<b>BJ650-10001</b>	8	M10 x 1.5 -55L	BJ350-10001	210	103
<b>BJ650-12001</b>	10	M12 x 1.75-60L	BJ350-12001	250	121

## Tall

Part Number	A	B	C	D	E	F	G	H	J	K
<b>BJ650-06002</b>	32	12	26	20	20	30	48	4	12	5.5
<b>BJ650-08002</b>	32	12	33	25.2	20	34	57	4	15	5.5
<b>BJ650-10002</b>	44	16	40	30.7	30	45	76	5	18	9
<b>BJ650-12002</b>	44	16	49	38.2	30	50	86	5	20	9
<b>BJ650-16002</b>	44	16	54	43.7	30	50	86	5	20	9

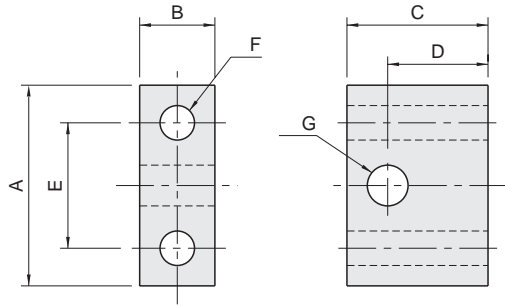
Part Number	L	M	Work Supports	Weight (g)	A:Recommended Distance between Work Supprt and Remote-Control Unit
<b>BJ650-06002</b>	5	M 6 x 1 -35L	BJ351-06001	85	52
<b>BJ650-08002</b>	6	M 8 x 1.25-40L	BJ351-08001	115	62
<b>BJ650-10002</b>	8	M10 x 1.5 -55L	BJ351-10001	240	79
<b>BJ650-12002</b>	10	M12 x 1.75-60L	BJ351-12001	310	92
<b>BJ650-16002</b>	10	M12 x 1.75-60L	BJ351-16001	335	95

## BJ651

## REMOTE-CONTROL EXTENSION BLOCKS



Material:S45C steel  
Finish :Black oxide



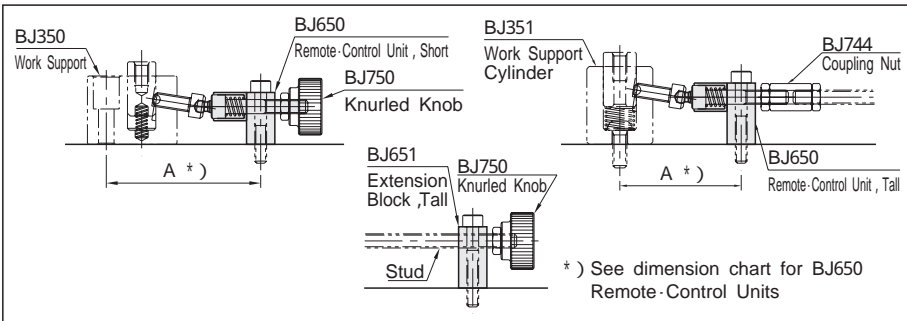
## Short

Part Number	A	B	C	D	E	F	G	Remote-Control Units	Weight (g)
<b>BJ651-06001</b>	32	12	22	16	20	5.5	6.5	BJ650-06001	55
<b>BJ651-08001</b>	32	12	27	19.2	20	5.5	8.5	BJ650-08001	65
<b>BJ651-10001</b>	44	16	32	22.2	30	9	10.5	BJ650-10001	140
<b>BJ651-12001</b>	44	16	36	25.2	30	9	12.5	BJ650-12001	145

## Tall

Part Number	A	B	C	D	E	F	G	Remote-Control Units	Weight (g)
<b>BJ651-06002</b>	32	12	26	20	20	5.5	6.5	BJ650-06002	65
<b>BJ651-08002</b>	32	12	33	25.2	20	5.5	8.5	BJ650-08002	80
<b>BJ651-10002</b>	44	16	40	30.7	30	9	10.5	BJ650-10002	170
<b>BJ651-12002</b>	44	16	49	38.2	30	9	12.5	BJ650-12002	205
<b>BJ651-16002</b>	44	16	54	43.7	30	9	12.5	BJ650-16002	230

## How To Use



Block that works with a BJ650 Remote-Control Unit to extend the remote-control distance .

Note:When used with a BJ650 Remote-Control Unit , a BJ350 or BJ351 Work Support provides lower support capacity .

Modular  
Fixture BasesBlank  
Fixture BasesQuick-Change  
Fixture BasesStandard  
Fixture PartsModular  
Fixture PartsOne-Touch  
Clamps

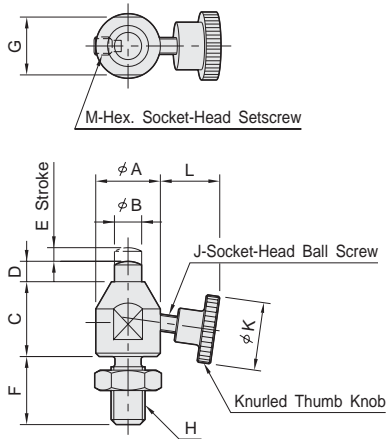
# BJ360

## COMPACT WORK SUPPORTS



[Body]  
 Material: S45C steel  
 Finish : Black oxide

[Piston]  
 Material: SK95 steel  
 Finish : Black oxide  
 Heat treated

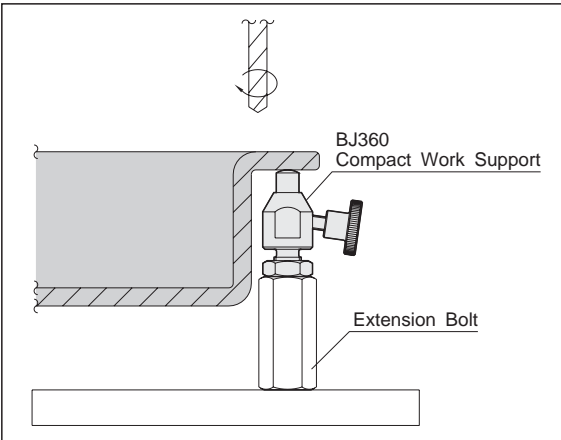


Note) The socket-head ball screw is glued to the knurled thumb knob.

Part Number	A	B	C	D	E	F	G	H	J	K
<b>BJ360-08001</b>	15	6	18	5	3	16	13	M 8 x 1.25	M4 x 0.7-16L	16
<b>BJ360-10001</b>	19	8	22	6	4	20	17	M10 x 1.5	M5 x 0.8-20L	20
<b>BJ360-12001</b>	22	10	25			24	19	M12 x 1.75	M6 x 1 -25L	24

Part Number	L	M	Piston Spring Force (N)	Support Capacity (N)	Weight (g)
<b>BJ360-08001</b>	13.2	M4 x 0.7-6L	1.5 to 3.0	200	36
<b>BJ360-10001</b>	16.3		1.8 to 3.0	300	72
<b>BJ360-12001</b>	22.3		400	150	

### How To Use



Modular  
Fixture Bases

Blank  
Fixture Bases

Quick-Change  
Fixture Bases

Standard  
Fixture Parts

Modular  
Fixture Parts

One-Touch  
Clamps

## BJ352

## WORK SUPPORTS WITH CAM HANDLE



## [Body]

Material:S45C steel  
Finish :Black oxide

## [Piston]

Material:SK95 steel  
Finish :Black oxide  
Heat Treat:Quenched and tempered

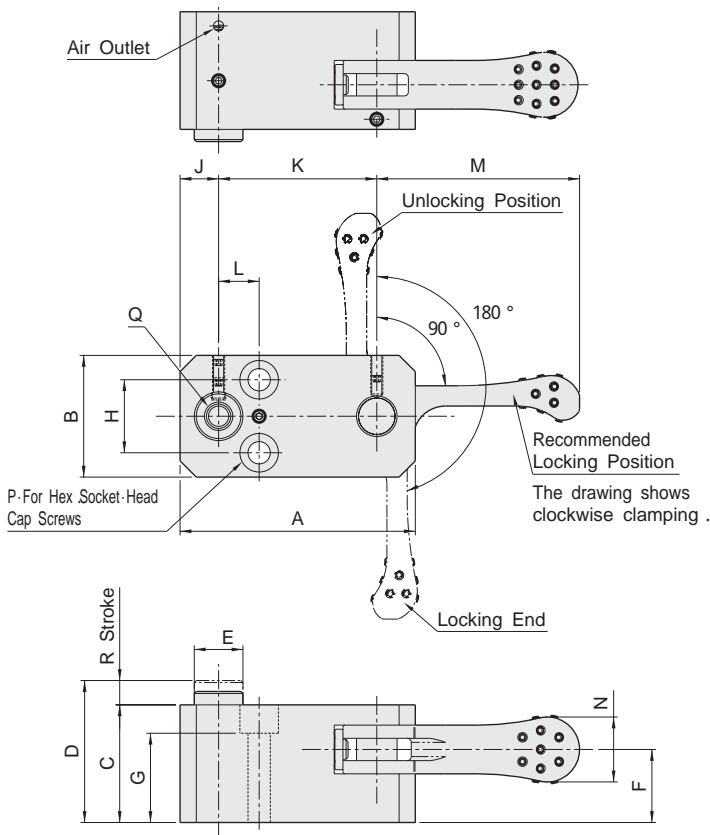
## [Locking Pin]

Material:S45C steel  
Finish :Black oxide  
Heat Treat:Quenched and tempered

## [Handle]

Material:SCM440 steel  
Finish :Black oxide  
Heat Treat:Quenched and tempered

- The clamping direction can easily be changed.

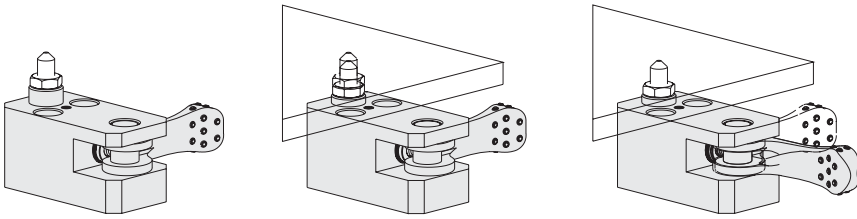


Part Number	A	B	C	D	E	F	G	H	J	K	L	M	N
<b>BJ352-05001</b>	52	25	24	29	10	14	19	15	8	36	8	40	14
<b>BJ352-06001</b>	58	30	29	35	12	18	22	18	9.5	39	10	50	16
<b>BJ352-08001</b>	75	38	37	45	16	23	25	24	12	51	12	63	19
<b>BJ352-10001</b>	85	45	42	52	19	26	30	28	14.5	56	15	80	24

Part Number	P	Q	R	Cam Handles Part Number	Allowable Operating Load(N)	Support Capacity(N)	Piston Spring Force(N)	Locking Mechanism	Weight (g)
<b>BJ352-05001</b>	M4	M 5 x 0.8 8 deep	5	QLCA-04	80	500	0 to 6	Spiral Cam Cam Angle:4°	213
<b>BJ352-06001</b>	M5	M 6 x 1 10 deep	6	QLCA-05	100	700	0 to 6		335
<b>BJ352-08001</b>	M6	M 8 x 1.25 15 deep	8	QLCA-06	150	900	0 to 7		738
<b>BJ352-10001</b>	M8	M10 x 1.5 15 deep	10	QLCA-08	200	1,200	1 to 11		1,110

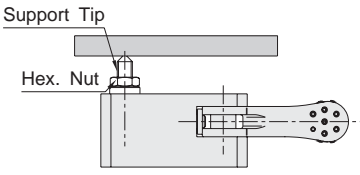
\*)Allowable load to operate the handle

## How To Operate

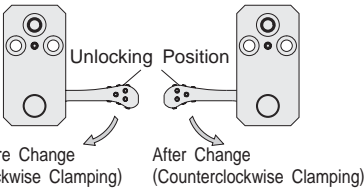


- 1. Unlocked**  
No workpiece loaded
- 2. Workpiece Loading**  
Load a workpiece, and the piston lowers.
- 3. Clamping**  
Turn the handle to lock the piston.

**Adjusting Handle Locking Position**  
Ensure before use that the handle comes to the recommended position when the piston is locked, by adjusting the height of a support tip.

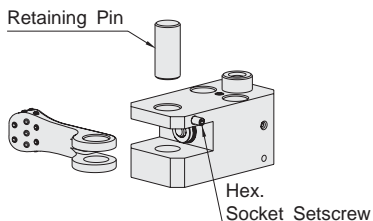
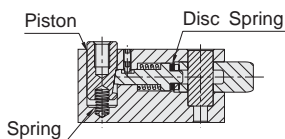


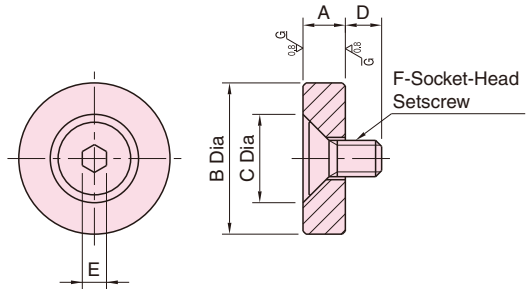
**Changing Clamping Direction**  
Loosen the hex. socket setscrew to remove the retaining pin. Turn the handle upside down and put it in position again.



Before Change (Clockwise Clamping)      After Change (Counterclockwise Clamping)

•The built-in disc spring prevents loosened locking.



**BJ763****FLAT FEET**

[Body]

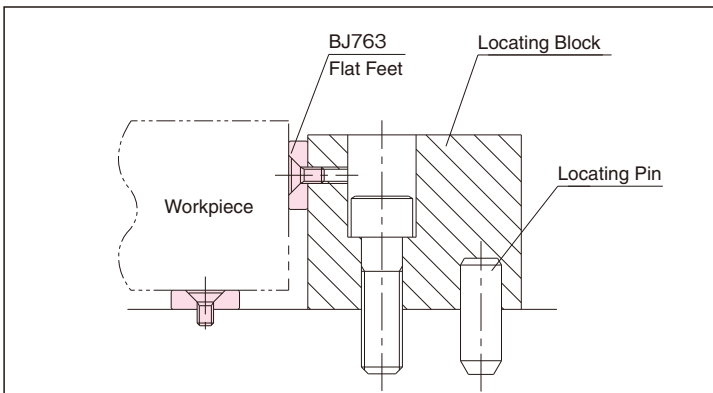
Material : S45C steel

Heat Treat : Quenched and tempered

Finish : Black oxide

Precision ground

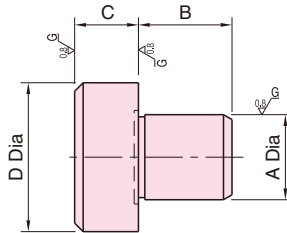
Part Number	A ( $\begin{smallmatrix} +0.01 \\ 0 \end{smallmatrix}$ )	B	C	D	E	F	Weight (g)
<b>BJ763-06001</b>	5	25	14	7.7	4	M6x1	20
<b>BJ763-06002</b>		30					30
<b>BJ763-06003</b>		35					40
<b>BJ763-06004</b>	10	25	10.7	4	M6x1	40	
<b>BJ763-06005</b>		30				60	
<b>BJ763-06006</b>		35				80	
<b>BJ763-08001</b>	10	30	19.4	11.3	5	M8x1.25	60
<b>BJ763-08002</b>		35					80
<b>BJ763-08003</b>		40					100
<b>BJ763-08004</b>	15	30	11.3	5	M8x1.25	90	
<b>BJ763-08005</b>		35				115	
<b>BJ763-08006</b>		40				150	

**How To Use**

Use to support and locate a workpiece. The accuracy of a locating block can be easily compensated by regrinding the top surface of Flat Feet.

# BJ769

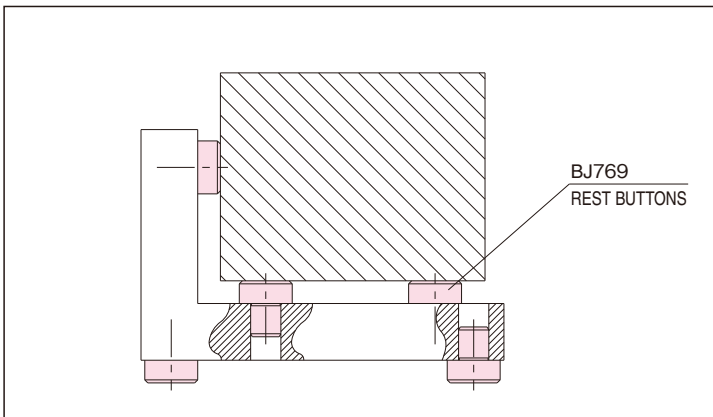
# REST BUTTONS



Material : SUM43 steel  
 Heat Treat : Quenched and tempered (Rc 40 - 45)  
 Finish : Black oxide  
 Precision ground

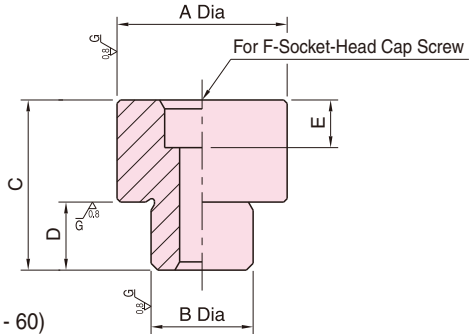
Part Number	A ( $+0.025$ $+0.012$ )	B	C ( $+0.03$ 0)	D	Weight (g)
<b>BJ769-06005</b>	6	8	5	10	5
<b>BJ769-06010</b>			10		8
<b>BJ769-08005</b>	8	10	5	16	12
<b>BJ769-08010</b>			10		20
<b>BJ769-08015</b>			15		28
<b>BJ769-08020</b>			20		36
<b>BJ769-10010</b>	10	12	10	20	32
<b>BJ769-10015</b>			15		45
<b>BJ769-10020</b>			20		58

## How To Use



# BJ401

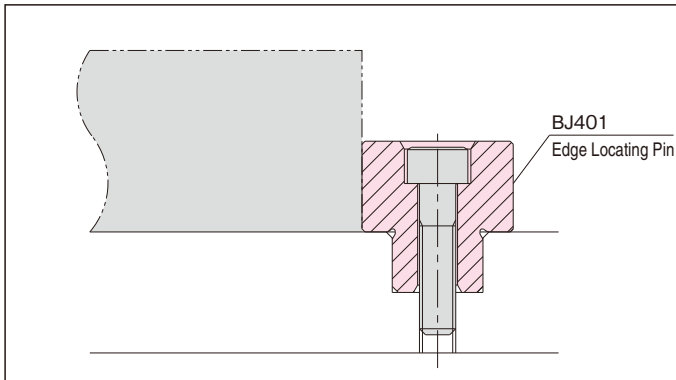
# EDGE LOCATING PINS



Material : SK95 steel  
 Heat Treat : Quenched and tempered (Rc 55 - 60)  
 Finish : Black oxide  
 Precision ground

Part Number	A (±0.01)	B (h6)	C	D (-0.3 -0.5)	E	F	Weight (g)
<b>BJ401-04001</b>	15	10	18	8	5	M 4	15
<b>BJ401-04002</b>			28				28
<b>BJ401-06001</b>	20	15	25	10	7	M 6	41
<b>BJ401-06002</b>			35				63
<b>BJ401-06003</b>	25		25				62
<b>BJ401-06004</b>	40		115				
<b>BJ401-10001</b>	30	20	27	12	11	M10	79
<b>BJ401-10002</b>			47				175
<b>BJ401-10003</b>	35		27				109
<b>BJ401-10004</b>			47				245

## How To Use



# BJ460

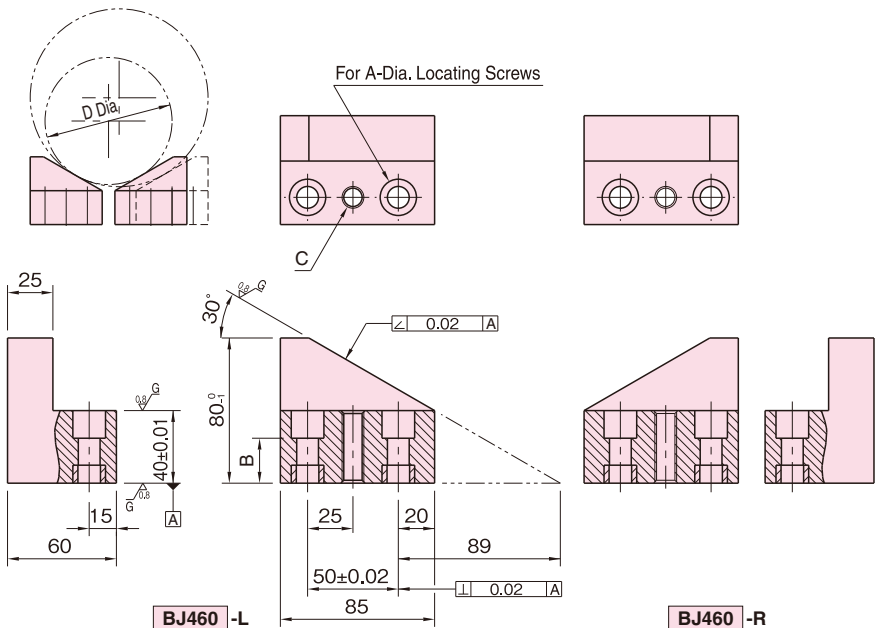
# SPLIT HORIZONTAL V BLOCKS



**BJ460** -L

**BJ460** -R

Material : S45C steel  
 Heat Treat : Quenched and tempered (Rc 58 - 62)  
 Finish : Black oxide  
 Precision ground



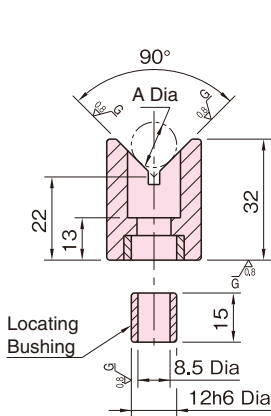
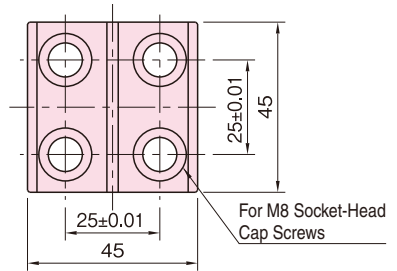
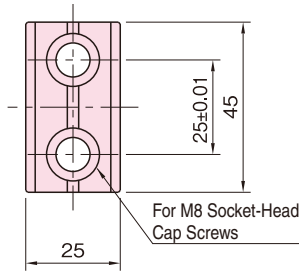
Part Number	A (F7)	B	C	D		Locating Screws	Weight (kg)
				Min.	Max.		
<b>BJ460-1230L</b>	12	23	M12x1.75	50	600	BJ700-12055	2.1
<b>BJ460-1230R</b>							
<b>BJ460-1630L</b>	16	20	M16x2	50	600	BJ700-16055	1.9
<b>BJ460-1630R</b>							

# BJ440 (Mini)

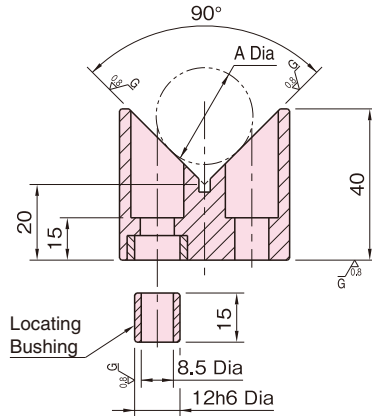
# HORIZONTAL V BLOCKS



Material : S45C steel  
 Heat Treat : Induction hardened  
 Finish : Black oxide  
 Precision ground

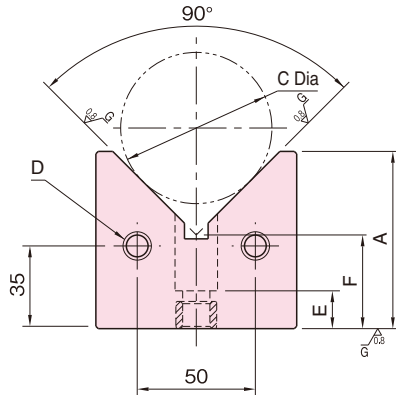
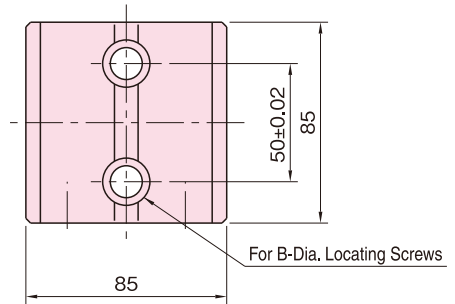


**BJ440-08032**



**BJ440-08040**

Part Number	A		Weight (g)
	Min.	Max.	
<b>BJ440-08032</b>	10	25	200
<b>BJ440-08040</b>	15	50	370

**BJ440 (Standard & Heavy)****HORIZONTAL V BLOCKS**

Material : S45C steel

Heat Treat : Quenched and tempered (Rc 45 - 55)

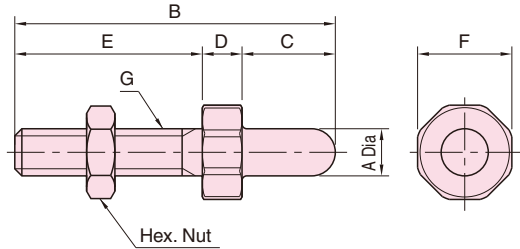
Finish : Black oxide

Precision ground

Part Number	A	B (F7)	C		D	E	F	Locating Screws	Weight (kg)
			Min.	Max.					
<b>BJ440-12063</b>	63	12	15	80	M12×1.75	22	34.72	BJ700-12055	2.9
<b>BJ440-12075</b>	75			100	30-deep		39.65		3.3
<b>BJ440-16063</b>	63	16	15	80	M16×2	25	34.72	BJ700-16065	2.9
<b>BJ440-16075</b>	75			100	35-deep		39.65		3.3

# BJ331

# MINIATURE JACKS



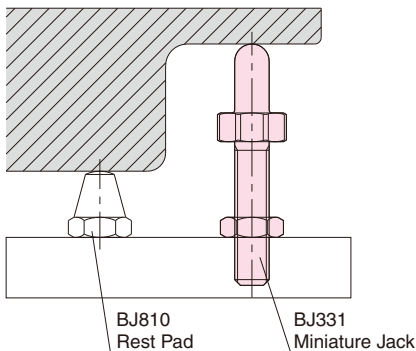
Material : S45C steel

Heat Treat : Quenched and tempered (Rc 33 - 39)

Finish:Black oxide

Part Number	A	B	C	D	E	F	G	Load Capacity (N)	Weight (g)
<b>BJ331-06001</b>	6	37	6	6	25	13	M 6x1	3,600	11
<b>BJ331-06002</b>		43	12						13
<b>BJ331-08001</b>	8	45	8	7	30	17	M 8x1.25	6,500	40
<b>BJ331-08002</b>		53	16						45
<b>BJ331-10001</b>	10	58	10	8	40	19	M10x1.5	10,400	60
<b>BJ331-10002</b>		68	20						65
<b>BJ331-12001</b>	12	72	12	10	50	24	M12x1.75	15,100	110
<b>BJ331-12002</b>		84	24						120
<b>BJ331-16001</b>	16	89	16	13	60	30	M16x2	28,200	240
<b>BJ331-16002</b>		105	32						265
<b>BJ331-20001</b>	20	115	20	15	80	36	M20x2.5	44,100	350
<b>BJ331-20002</b>		135	40						400

## How To Use

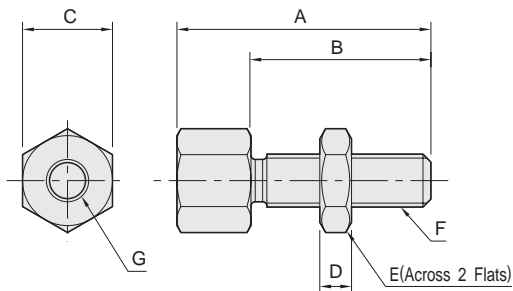


## BJ332

## JACK SCREWS

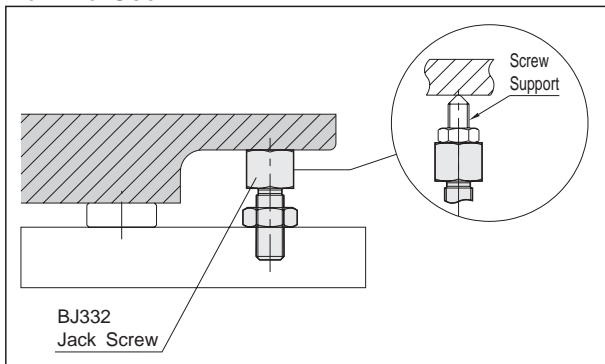


Material: S45C steel  
Finish : Black oxide



Part Number	A	B	C	D	E	F	G	Weight (g)
<b>BJ332-08020</b>	30	20	13	5	13	M 8 x 1.25	M 6 x 1 6 deep	20
<b>BJ332-08030</b>	40	30						25
<b>BJ332-10024</b>	38	24	17	6	17	M10 x 1.5	M 8 x 1.25 8 deep	45
<b>BJ332-10034</b>	48	34						50
<b>BJ332-12033</b>	51	33	22	7	22	M12 x 1.75	M10 x 1.5 10 deep	95
<b>BJ332-12048</b>	66	48						110
<b>BJ332-16040</b>	62	40	27	10	27	M16 x 2	M12 x 1.75 12 deep	185
<b>BJ332-16055</b>	77	55						210

## How To Use



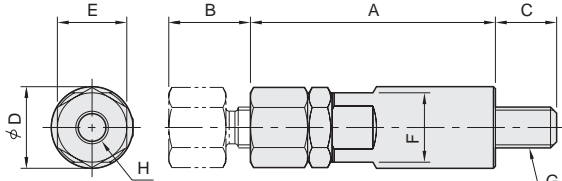
Adjustable support that accepts a tip on top.

**BJ333**

**SMALL SCREW JACKS**



Material: S45C steel  
Finish : Black oxide



Modular  
Fixture Bases

Blank  
Fixture Bases

Quick-Change  
Fixture Bases

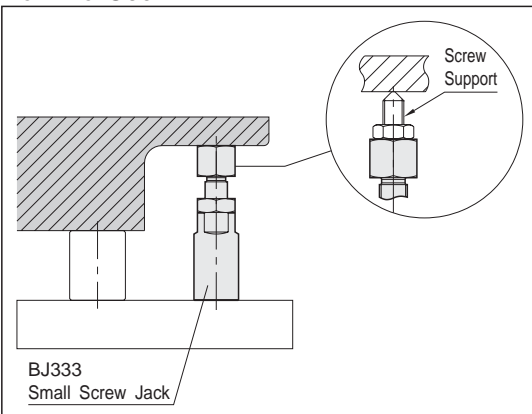
Standard  
Fixture Parts

Modular  
Fixture Parts

One-Touch  
Clamps

Part Number	A	B	C	D	E	F	G	H	Weight (g)
<b>BJ333-08040</b>	40	10	12	16	13	13	M 8 x 1.25	M 6 x 1 6 deep	55
<b>BJ333-08050</b>	50	20							70
<b>BJ333-10050</b>	50	10	14	20	17	17	M10 x 1.5	M 8 x 1.25 8 deep	110
<b>BJ333-10060</b>	60	20							135
<b>BJ333-12065</b>	65	15	19	24	22	22	M12 x 1.75	M10 x 1.5 10 deep	220
<b>BJ333-12080</b>	80	30							275
<b>BJ333-16080</b>	80	15	24	32	27	27	M16 x 2	M12 x 1.75 12 deep	460
<b>BJ333-16095</b>	95	30							555

**How To Use**



Adjustable support that accepts a tip on top.

# BJ330

# SCREW JACKS

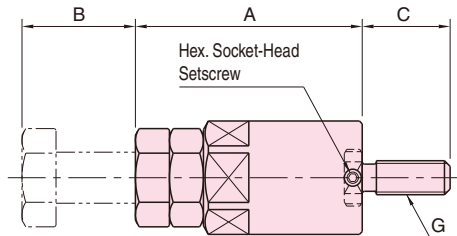
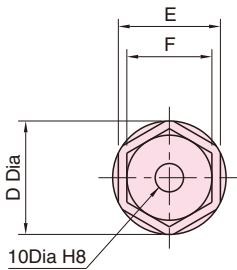


[Body]

Material : S45C steel  
Finish : Black oxide

[Bolt]

Material : SCM435 steel  
Heat treat : Quenched and tempered  
Finish : Black oxide



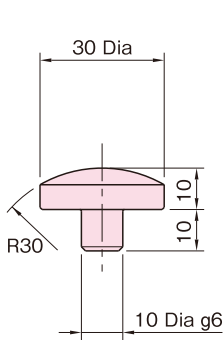
Part Number	A	B	C	D	E	F	G	Load Capacity (N)	Weight (g)
<b>BJ330-12040</b>	40	10	30	40	36	30	M12x1.75	31,800	350
<b>BJ330-12050</b>	50	20							420
<b>BJ330-12070</b>	70	40		570					
<b>BJ330-12100</b>	100	50		1,350					
<b>BJ330-12150</b>	150	100		50	46	36		44,900	2,100
<b>BJ330-16040</b>	40	10	30	40	36	30	M16x2	31,800	360
<b>BJ330-16050</b>	50	20							430
<b>BJ330-16070</b>	70	40		580					
<b>BJ330-16100</b>	100	50		1,360					
<b>BJ330-16150</b>	150	100		50	46	36		44,900	2,110

### Feature:

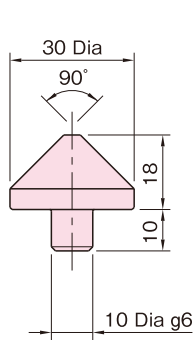
A radius Screw Jack Tip is available Use with Riser Cylinders for additional height.

**BJ733****SCREW-JACK TIP**

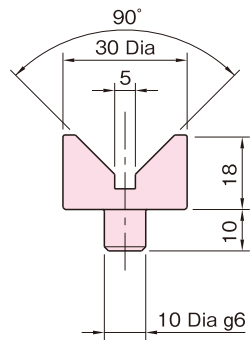
Material : S45C steel  
Heat Treat : Induction hardened  
Finish : Black oxide



**BJ733-10100**  
Radius Tip



**BJ733-10180**  
Conical Tip

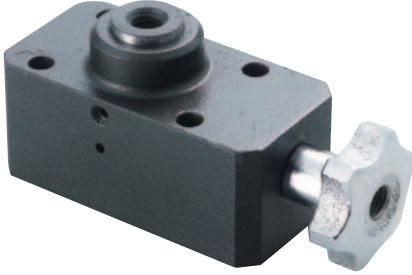


**BJ733-10280**  
V-Shaped Tip

Part Number	Weight (g)
<b>BJ733-10100</b>	50
<b>BJ733-10180</b>	60
<b>BJ733-10280</b>	70

## CP300

## EXTENDABLE WORK SUPPORTS



## [Body]

Material: S45C steel  
Finish : Black oxide

## [Piston &amp; Locking Pin]

Material: SK95 steel  
Finish : Black oxide  
Heat Treated

## [Spindle]

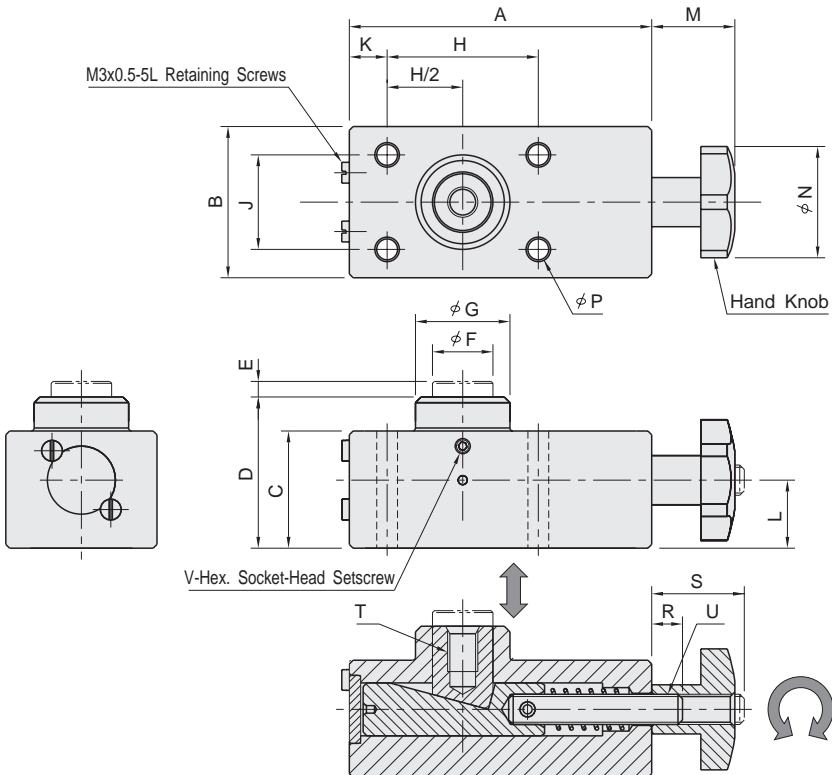
Material: S45C steel  
Finish : Black oxide  
Heat Treated

## [Piston Plug]

Material: S45C steel  
Finish : Black oxide

## [Knob]

Material: FC200 cast iron  
Finish : Chrome plated



Turning the hand knob clockwise lets the locking pin move upward and turning it counterclockwise lets the locking pin move downward.

Part Number	A	B	C	D	E	F	G	H	J	K	L	M	N	P	R	S
<b>CP300-08040</b>	80	40	31	40	4	16	25	40	25	10	18	22	32	5.5	8	23.5
<b>CP300-10050</b>	95	50	39	50	5	20	32	50	30	10	23	25	40	6.5	9	28
<b>CP300-12060</b>	115	60	47	60	6	24	38	60	40	15	28	32	50	9	12	35.5

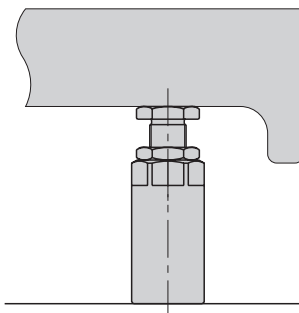
Part Number	T	U	V	Support Capacity(N)	Allowable Screw Torque (N·m)	Weight (kg)
<b>CP300-08040</b>	M 8 x 1.25 12 deep	M 8 x 1.25	M4 x 0.7	700	1	0.82
<b>CP300-10050</b>	M10 x 1.5 15 deep	M10 x 1.5	M4 x 0.7	800	1.5	1.52
<b>CP300-12060</b>	M12 x 1.75 18 deep	M12 x 1.75	M5 x 0.8	900	2	2.67

Note : The stated values of both "Support Capacity" and "Allowable Screw Torque" are based on the manual operation of the hand knob .

## How To Use

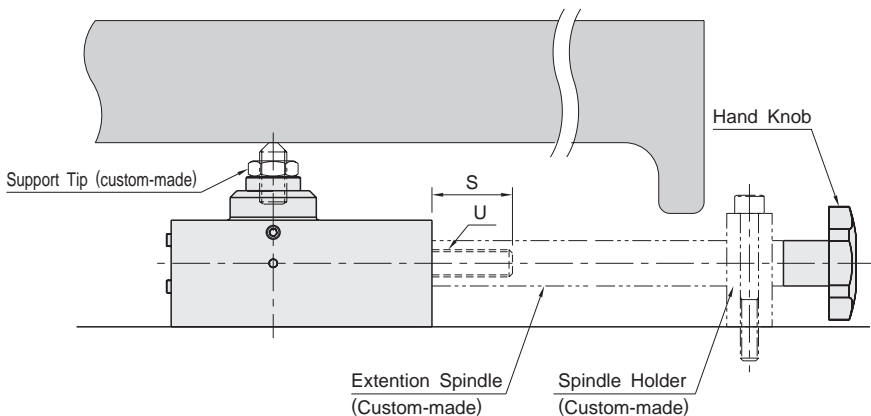
### Conventional Method

- Cumbersome height adjustment with a wrench
- Limited positioning area



### Extendable Work Support Method

- Easy height adjustment with a hand knob
- Flexible positioning



- Connecting an extension spindle allows adjusting the part height with ease .
- Provide a tapped hole for the extension spindle for connection , as specified in chart above .