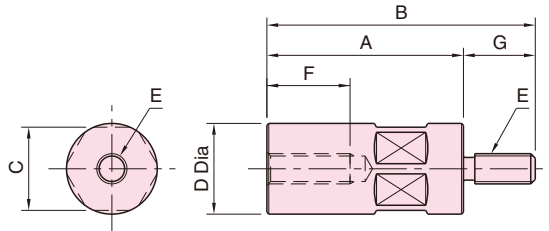


BJ600**RISER CYLINDERS**

Material : SCM435 steel for BJ600-08***

S45C steel for BJ600-12*** and BJ600-16***

Heat Treat : Quenched and tempered (BJ600-08*** only)

Finish : Black oxide

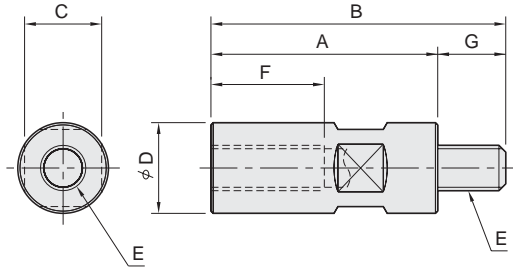
Part Number	A	B	C	D	E	F	G	Weight (g)
BJ600-08032	32	51	22	24	M 8x1.25	20	19	105
BJ600-08040	40	59						135
BJ600-08050	50	69						170
BJ600-08065	65	84						220
BJ600-08080	80	99						275
BJ600-08100	100	119						345
BJ600-12050	50	80	36	40	M12x1.75	35	30	480
BJ600-12065	65	95						640
BJ600-12080	80	110						780
BJ600-12100	100	130						980
BJ600-12125	125	155						1,230
BJ600-12160	160	190						1,570
BJ600-12200	200	230	1,970					
BJ600-16050	50	80	46	50	M16x2	35	30	770
BJ600-16065	65	95						1,000
BJ600-16080	80	110						1,230
BJ600-16100	100	130						1,540
BJ600-16125	125	155						1,920
BJ600-16160	160	190						3,490
BJ600-16200	200	230	55	60	4,370			

BJ601

SMALL RISER CYLINDERS

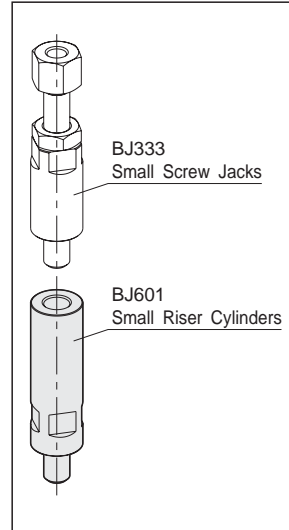


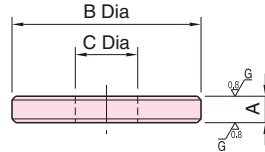
Material: S45C steel
Finish : Black oxide



Part Number	A	B	C	D	E	F	G	Weight (g)
BJ601-08032	32	44	13	16	M 8 x 1.25	18	12	45
BJ601-08040	40	52						55
BJ601-08050	50	62						70
BJ601-08065	65	77						90
BJ601-08080	80	92						115
BJ601-08100	100	112						145
BJ601-10040	40	54	17	20	M10 x 1.5	23	14	85
BJ601-10050	50	64						105
BJ601-10065	65	79						145
BJ601-10080	80	94						180
BJ601-10100	100	114						230
BJ601-10125	125	139						290
BJ601-12050	50	69	22	24	M12 x 1.75	30	19	160
BJ601-12065	65	84						200
BJ601-12080	80	99						255
BJ601-12100	100	119						325
BJ601-12125	125	144						415
BJ601-12160	160	179						540
BJ601-16050	50	74	27	32	M16 x 2	32	24	280
BJ601-16065	65	89						350
BJ601-16080	80	104						430
BJ601-16100	100	124						560
BJ601-16125	125	149						715
BJ601-16160	160	184						935

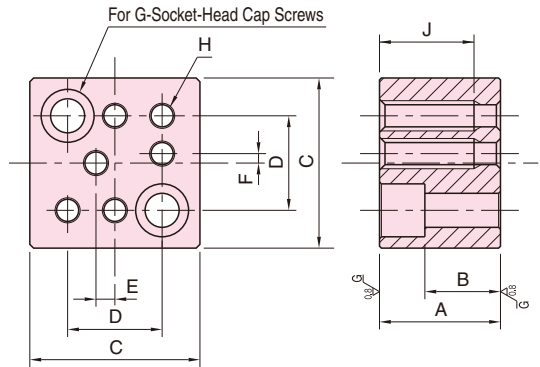
How To Use

Modular
Fixture BasesBlank
Fixture BasesQuick-Change
Fixture BasesStandard
Fixture PartsModular
Fixture PartsOne-Touch
Clamps

BJ623**SPACERS**

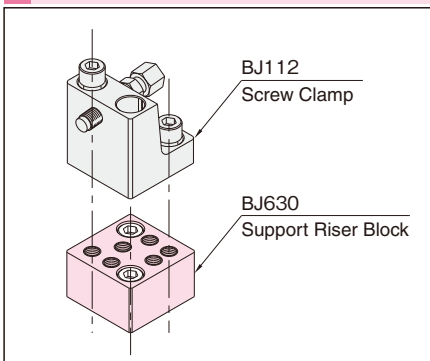
Material : S45C steel
 Heat Treat : Quenched and tempered
 Finish : Black oxide
 Precision ground

Part Number	A ($\begin{smallmatrix} +0.01 \\ 0 \end{smallmatrix}$)	B	C	Weight (g)
BJ623-08001	5	25	8.4	21
BJ623-08002		35		35
BJ623-08003	10	25		43
BJ623-08004		35		70
BJ623-10001	5	30	10.5	24
BJ623-10002		40		46
BJ623-10003	10	30		48
BJ623-10004		40		90
BJ623-12001	5	40	13	44
BJ623-12002		50		70
BJ623-12003	10	40		85
BJ623-12004		50		145
BJ623-16001	5	50	17	65
BJ623-16002		60		100
BJ623-16003	10	50		135
BJ623-16004		60		200

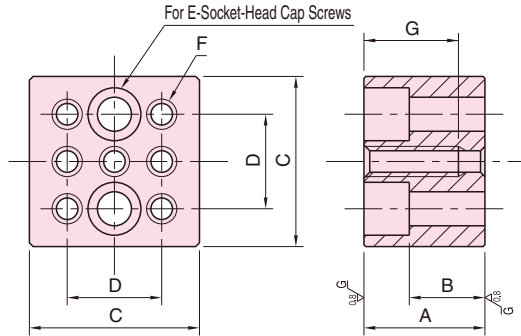
BJ630**SUPPORT RISER BLOCKS**

Material : S45C steel
 Finish : Black oxide
 Precision ground

Part Number	A (± 0.01)	B	C	D	E	F	G	H	J	Weight (kg)
BJ630-12025	25	12	85	50	10	5	M12	M12x1.75	Through	1.3
BJ630-12032	32	19								1.6
BJ630-12040	40	27								2.1
BJ630-12050	50	37								2.5
BJ630-16025	25	8	85	50	10	5	M16	M16x2	Through	1.2
BJ630-16032	32	15								1.4
BJ630-16040	40	23								1.8
BJ630-16050	50	33								2.3

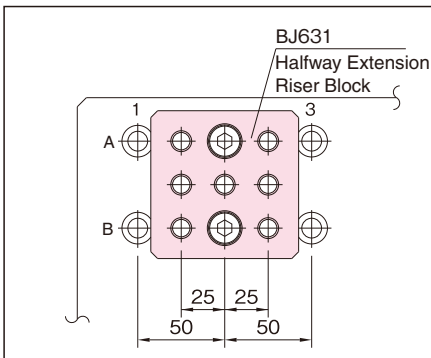
How To Use

Stackable blocks for raising supports or clamps up to a workpiece.

BJ631**HALFWAY EXTENSION RISER BLOCKS**

Material : S45C steel
 Finish : Black oxide
 Precision ground

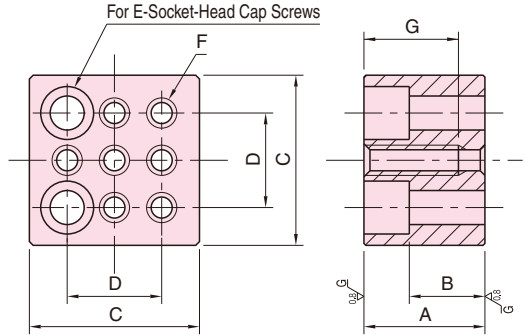
Part Number	A (±0.01)	B	C	D	E	F	G	Weight (kg)
BJ631-12025	25	12	85	50	M12	M12x1.75	Through	1.3
BJ631-12032	32	19						1.6
BJ631-12040	40	27					2.1	
BJ631-12050	50	37					2.5	
BJ631-16025	25	8	85	50	M16	M16x2	Through	1.2
BJ631-16032	32	15						1.4
BJ631-16040	40	23					1.8	
BJ631-16050	50	33					2.3	

How To Use

Stackable blocks that allows positioning components between grid points.

BJ632

EXTENSION RISER BLOCKS



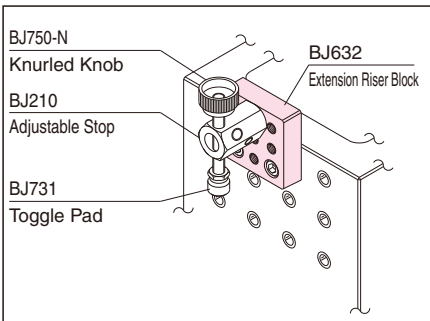
Material : S45C steel

Finish : Black oxide

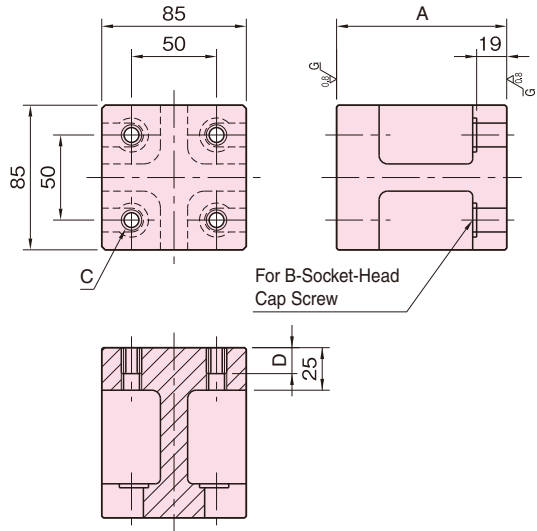
Precision ground

Part Number	A (±0.01)	B	C	D	E	F	G	Weight (kg)
BJ632-12025	25	12	85	50	M12	M12x1.75	Through	1.3
BJ632-12032	32	19						1.6
BJ632-12040	40	27					2.1	
BJ632-12050	50	37					2.5	
BJ632-16025	25	8	85	50	M16	M16x2	Through	1.2
BJ632-16032	32	15						1.4
BJ632-16040	40	23					1.8	
BJ632-16050	50	33					2.3	

How To Use



Stackable blocks that can be used to extend components beyond the edge of a tooling plate or block.

BJ633**SQUARE H RISERS**

[Body]

Material : FC300 cast iron

Annealed

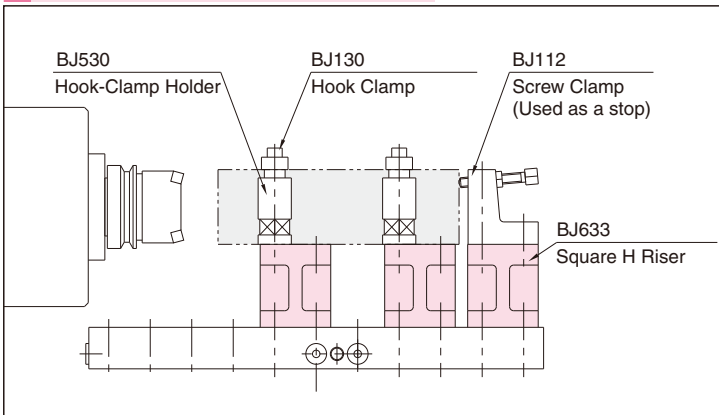
Precision ground

[Threaded Insert]

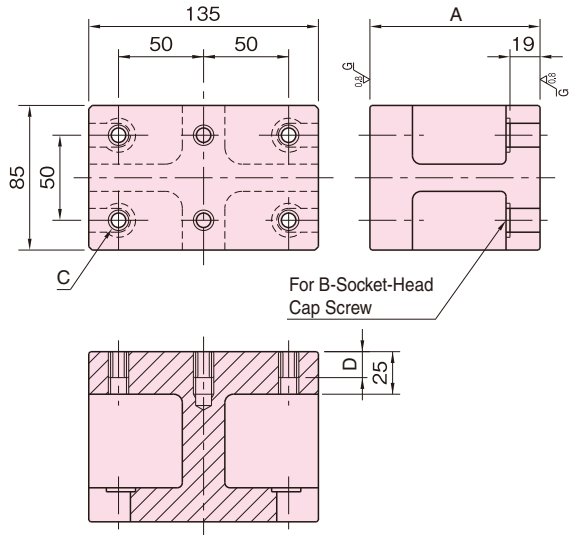
Material : S45C steel

Finish : Nitrocarburized

Part Number	A (± 0.01)	B	C	D	Weight (kg)
BJ633-12100	100	M12	M12x1.75	18	3.2
BJ633-12125	125				3.8
BJ633-16100	100	M16	M16x2	16	3.2
BJ633-16125	125				3.8

How To Use

Use to raise workpieces or components.

BJ634**RECTANGULAR H RISERS**

[Body]

Material : FC300 cast iron

Annealed

Precision ground

[Threaded Insert]

Material : S45C steel

Finish : Nitrocarburized

Part Number	A (± 0.01)	B	C	D	Weight (kg)
BJ634-12100	100	M12	M12x1.75	18	5.2
BJ634-12125	125				5.9
BJ634-16100	100	M16	M16x2	16	5.1
BJ634-16125	125				5.8